

APP CRS	Rwy Ldg	2925
056°	TDZE	834
	Apt Elev	836

RNAV (GPS) RWY 5

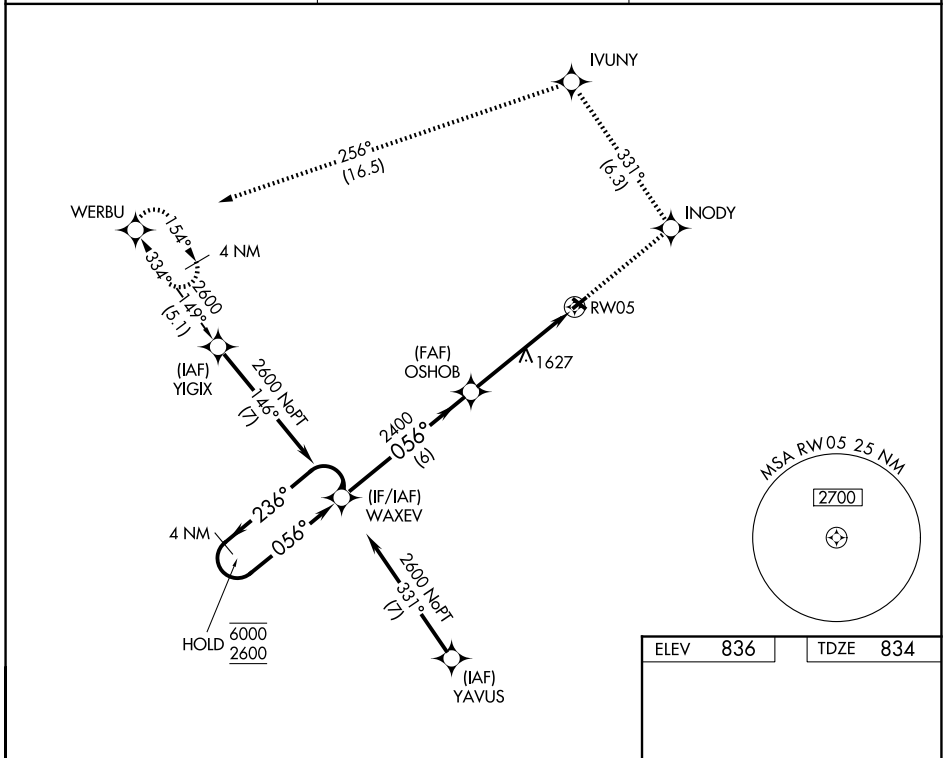
SMITH FLD (SMD)

RNP APCH - GPS.

▼ Rwy 5 helicopter visibility reduction below 3/4 NA. Circling to Rwy 13/31
 ▲ NA NA at night. When local altimeter setting not received, use FWA altimeter
 ❄️ -21°C setting and increase all MDAs 40 feet. VDP NA with FWA altimeter setting.

MISSED APPROACH: Climb to 2700 direct INODY and on track 331° to IVUNY and on track 256° to WERBU and hold.

AWOS-3 124.55	FORT WAYNE APP CON 127.2 284.6	UNICOM 122.8 (CTAF) 0
-------------------------	--	---------------------------------

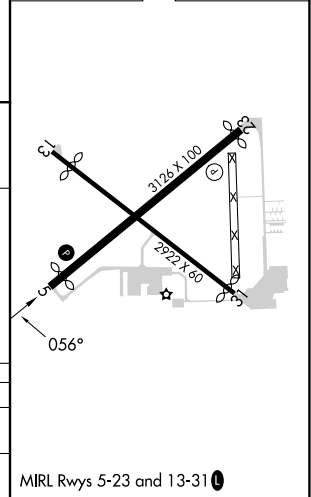


EC-2, 11 JUN 2026 to 09 JUL 2026

EC-2, 11 JUN 2026 to 09 JUL 2026

ELEV	836	TDZE	834
------	------------	------	------------

4 NM Holding Pattern	2700	INODY	tr 331°	IVUNY	tr 256°	WERBU
Visual Segment - Obstacles.						
6000	← 236°	WAXEV	OSHOB	2.4 NM to RW05	RW05	
2600	→ 056°		2400			
VGSI and descent angles not coincident (VGSI Angle 4.00/TCH 43).						
		6 NM		2.5 NM		2.4 NM
CATEGORY	A	B	C	D		
LNVA MDA	1880-1¼ 1046 (1100-1¼)	1880-1½ 1046 (1100-1½)	1880-3 1046 (1100-3)	NA		
CIRCLING	1880-1¼ 1044 (1100-1¼)	1880-1½ 1044 (1100-1½)	1940-3 1104 (1200-3)	NA		



MIRL Rwy 5-23 and 13-31 0