

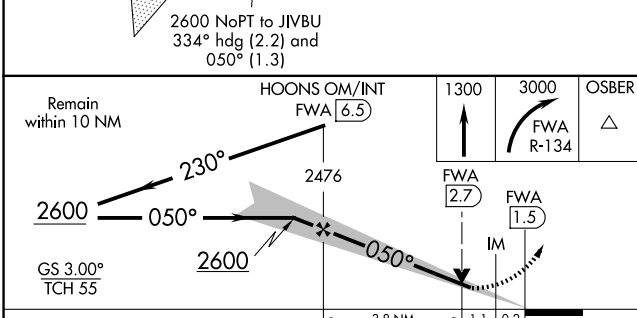
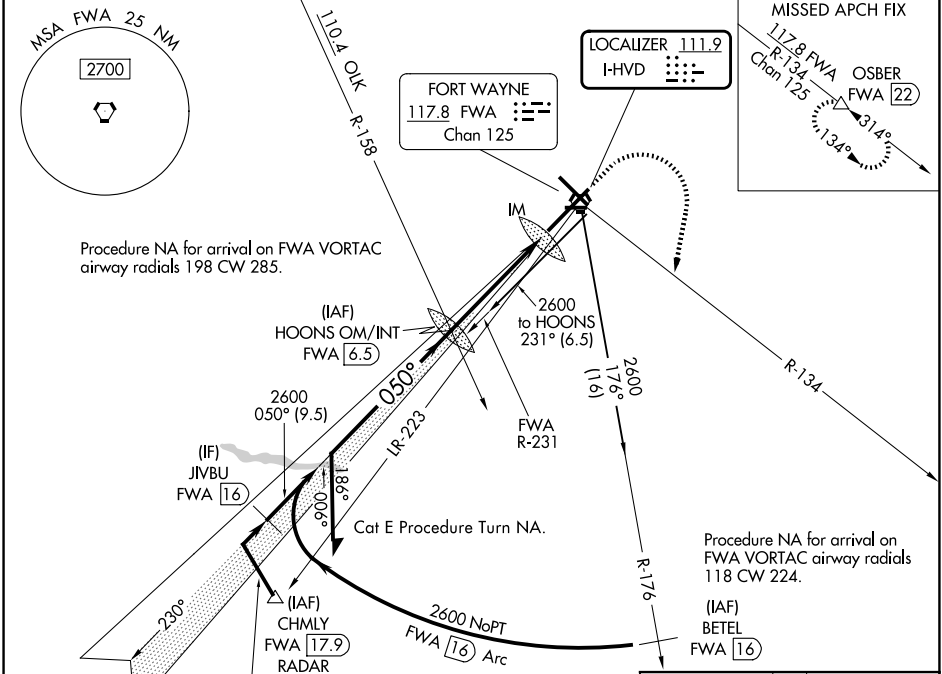
ILS or LOC RWY 5

FORT WAYNE INTL (FWA)

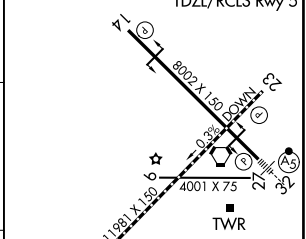
LOC I-HVD 111.9	APP CRS 050°	Rwy Ldg 11981
		TDZE 815
		Apt Elev 815

DME required. RADAR required for procedure entry at CHMLY.	ALSF-2 	MISSED APPROACH: Climb to 1300 then climbing right turn to 3000 on FWA R-134 to OSBER/FWA 22 DME and hold.
For inop ALS, increase S-ILS 5 Cat E visibility to RVR 4000, and S-LOC 5 Cats C/ D/E visibility to 1½ SM.		

ATIS 121.25 360.825	FORT WAYNE APP CON 127.2 284.6	FORT WAYNE TOWER 119.1 269.325	GND CON 121.9 348.6
-------------------------------	--	--	-------------------------------



ELEV	815		TDZE	815
HIRL Rwy 5-23 and 14-32				
REIL Rwy 14 and 23				
TDZL/RCLS Rwy 5				



CATEGORY	A	B	C	D	E
S-ILS 5	1015/18 200 (200-½)				
S-LOC 5	1300/24	485 (500-½)	1300/50		485 (500-1)
CIRCLING	1300-1	485 (500-1)	1360-1½ 545 (600-1½)	1520-2¼ 705 (800-2¼)	1520-2½ 705 (800-2½)

FAF to MAP 5 NM					
Knots	60	90	120	150	180
Min:Sec	5:00	3:20	2:30	2:00	1:40

EC-2, 11 JUN 2026 to 09 JUL 2026

EC-2, 11 JUN 2026 to 09 JUL 2026