

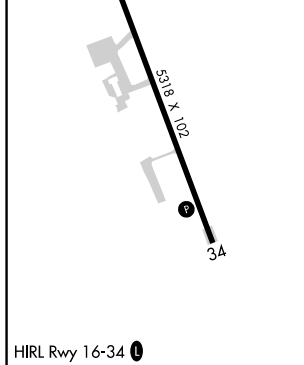
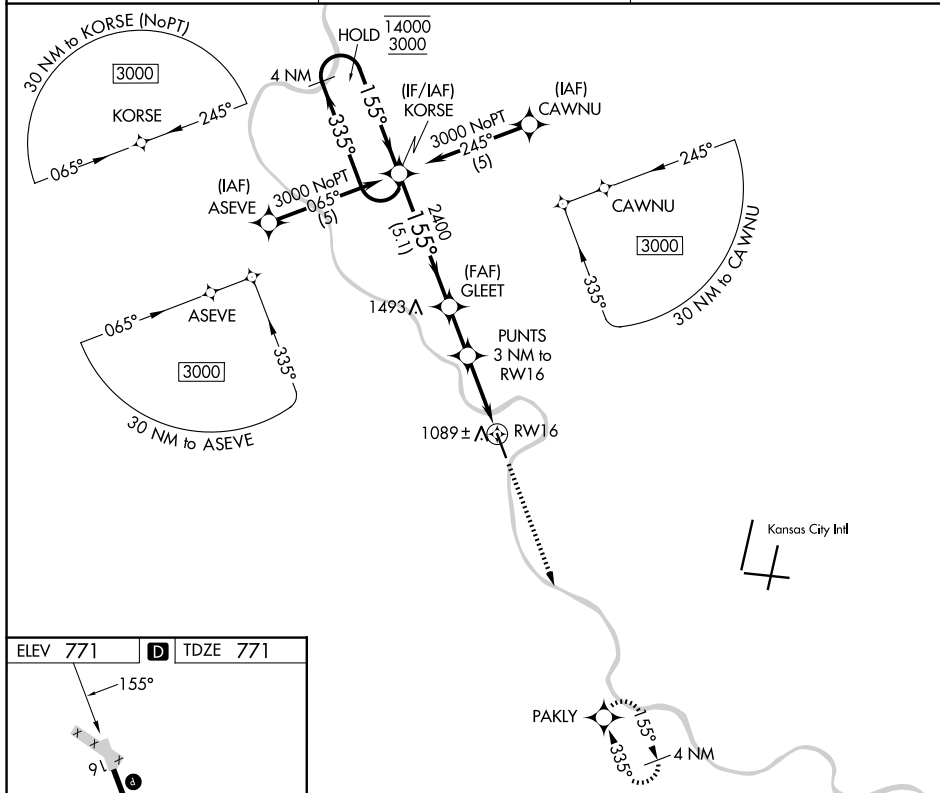
APP CRS	Rwy Ldg	<b>5318</b>
<b>155°</b>	TDZE	<b>771</b>
	Apt Elev	<b>771</b>

# RNAV (GPS) RWY 16

SHERMAN AAF (FLV)

RNP APCH - GPS.	MISSED APPROACH: Climb to 3100 direct PAKLY and hold.
<p><b>▼</b> Circling NA west of Rwy 16-34. Procedure NA at night. Rwy 16 helicopter visibility reduction below 1 SM NA. Use Kansas City Intl altimeter setting.</p> <p><b>▲</b> NA</p>	

MCI ASOS <b>128.375</b>	KANSAS CITY APP CON <b>124.7 284.7</b>	CTAF <b>126.20</b>
----------------------------	---	-----------------------



4 NM Holding Pattern				VGSI and descent angles not coincident (VGSI Angle 3.00/TCH 40).		3100	PAKLY
KORSE				GLEET		↑	✦
14000 ← 335°				2400			
3000 → 155°				PUNTS 3 NM to RWY 16		RWY 16	
				3.04° TCH 50			
				1780			
				5.1 NM		1.9 NM	
				3 NM			
CATEGORY	A	B	C	D			
LNAV MDA	1520-1 749 (800-1)	1520-1¼ 749 (800-1¼)	1520-2 749 (800-2)	NA			
CIRCLING	1520-1 749 (800-1)	1520-1¼ 749 (800-1¼)	1520-2¼ 749 (800-2¼)	NA			

NC-2, 11 JUN 2026 to 09 JUL 2026

NC-2, 11 JUN 2026 to 09 JUL 2026