

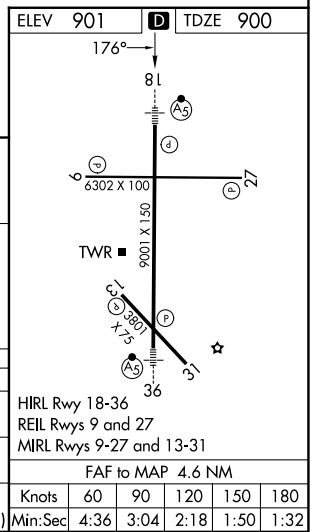
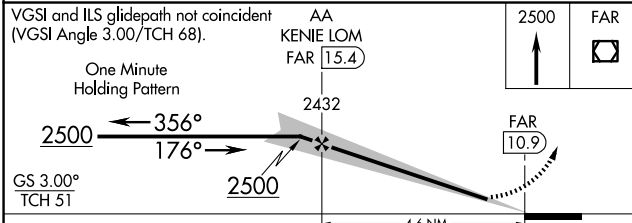
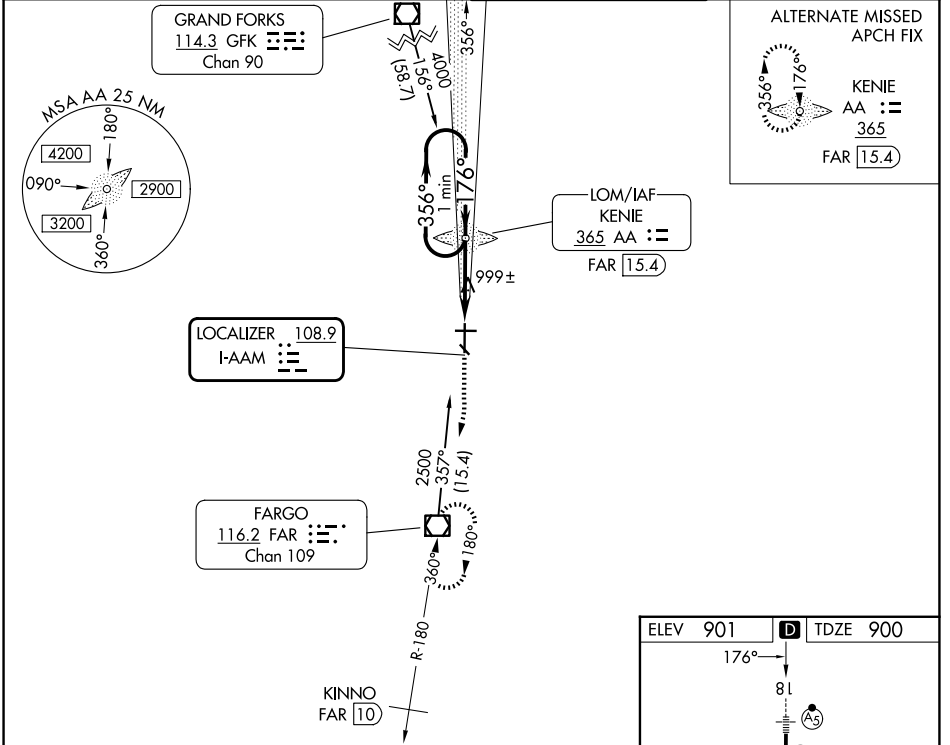
LOC I-AAM 108.9	APP CRS 176°	Rwy Ldg TDZE Apt Elev 9001 900 901
---------------------------	------------------------	--

ILS or LOC RWY 18

HECTOR INTL (FAR)

ADF or DME required for procedure entry.	MALSR 	MISSED APPROACH: Climb to 2500 direct FAR VOR/DME and hold.
 For inop MALSR, increase S-ILS 18 Cat E visibility to RVR 4000, and S-LOC 18 Cat E visibility to RVR 5000. * Visibility Cat A/B/C/D RVR 1800 authorized with the use of FD or AP or HUD to DA.		

ATIS 124.5 379.2	FARGO APP CON 120.4 377.15	FARGO TOWER 133.8 290.4	GND CON 121.9 348.6
----------------------------	--------------------------------------	-----------------------------------	-------------------------------



CATEGORY	A	B	C	D	E
S-ILS 18*	1100/24 200 (200-1/2)				
S-LOC 18	1260/24	360 (400-1/2)	1260/40 360 (400-3/4)		
CIRCLING	1380-1	479 (500-1)	1520-1 3/4 619 (700-1 3/4)	1620-2 1/4 719 (800-2 1/4)	1620-2 1/2 719 (800-2 1/2)

NC-1, 11 JUN 2026 to 09 JUL 2026

NC-1, 11 JUN 2026 to 09 JUL 2026