

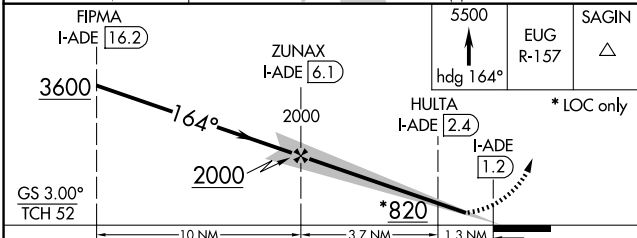
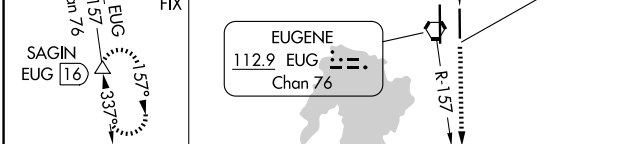
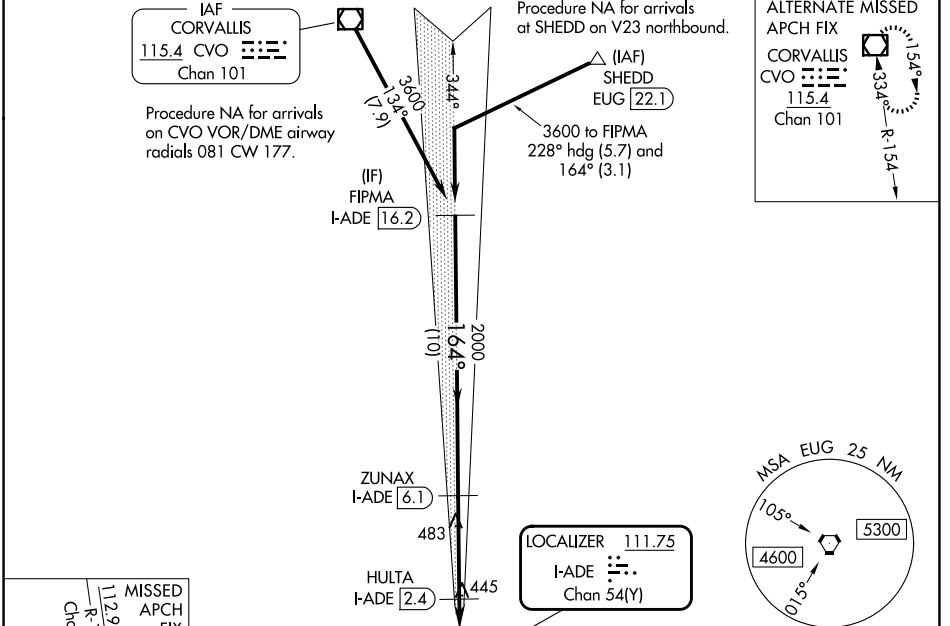
LOC/DME I-ADE <b>111.75</b> Chan 54 (Y)	APP CRS <b>164°</b>	Rwy Ldg TDZE Apt Elev <b>6000</b> <b>369</b> <b>374</b>
---	------------------------	--

# ILS or LOC RWY 16L

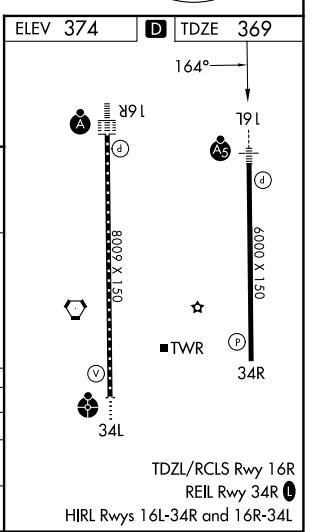
MAHLON SWEET FLD (EUG)

DME required.		MALSR	MISSED APPROACH: Climb to 5500 on heading 164° and EUG VORTAC R-157 to SAGIN/EUG 16 DME and hold, continue climb-in-hold to 5500.
Simultaneous approach authorized.			

ATIS <b>125.225</b>	CASCADE APP CON* <b>119.6 348.7</b>	EUGENE TOWER* <b>118.9</b> (CTAF) <b>371.9</b> (16R/34L) <b>124.15 371.9</b> (16L/34R)	GND CON <b>121.7 269.5</b>	UNICOM <b>122.95</b>
------------------------	--	--	-------------------------------	-------------------------



CATEGORY	A	B	C	D
S-ILS 16L		569-1/2	200 (200-1/2)	
S-LOC 16L		700-1/2	331 (400-1/2)	
CIRCLING	820-1 446 (500-1)	840-1 466 (500-1)	1000-1 3/4 626 (700-1 3/4)	1140-2 1/2 766 (800-2 1/2)



NW-1, 11 JUN 2026 to 09 JUL 2026

NW-1, 11 JUN 2026 to 09 JUL 2026