

LOC/DME I-OUW 109.9 Chan 36	APP CRS 195°	Rwy Ldg TDZE N/A N/A Apt Elev 1987
--	------------------------	---

ELKINS/
RANDOLPH COUNTY (JENNINGS RANDOLPH FLD)(EKN)
LDA-C

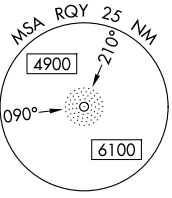
ADF REQUIRED

⚠ Circling Rwy 14, 23, 32 NA at night. When local altimeter setting not received, use Buckhannon altimeter setting and increase all MDA 100 feet.

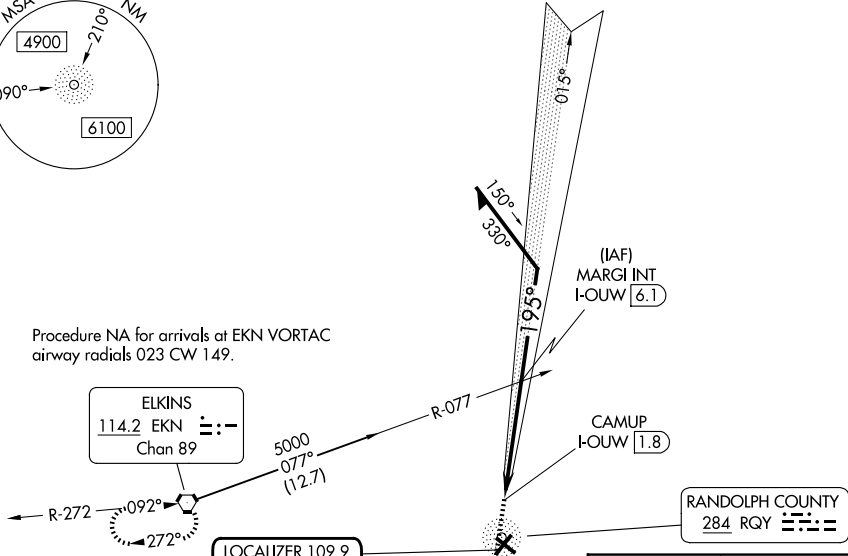
❄ -19°C

MISSED APPROACH: Climb to 5000 on RQY NDB 200° then climbing right turn to 5500 direct EKN VORTAC and hold.

ASOS 119.275	CLARKSBURG APP CON ★ 121.15 284.65	CTAF 123.6	122.9 0
------------------------	--	----------------------	----------------



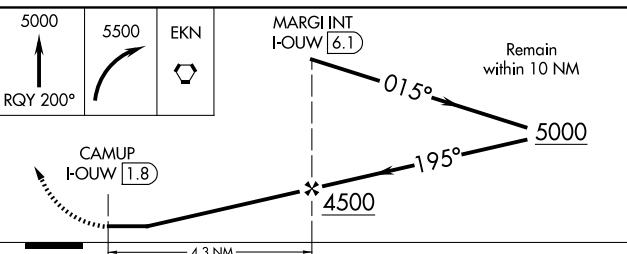
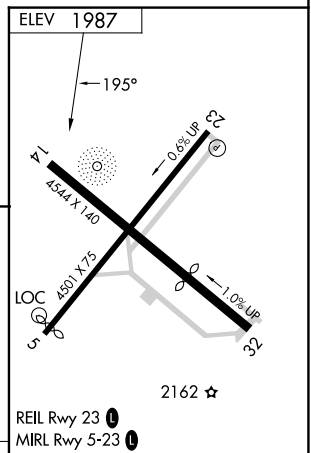
Procedure NA for arrivals at EKN VORTAC
airway radials 023 CW 149.



ELKINS
114.2 EKN
Chan 89

LOCALIZER 109.9
I-OUW
Chan 36

RANDOLPH COUNTY
284 RQY



CATEGORY	A	B	C	D	FAF to MAP 4.3 NM					
CIRCLING	3100-1¼ 1113 (1200-1¼)	3140-1½ 1153 (1200-1½)	3720-3 1733 (1800-3)	4020-3 2033 (2100-3)	Knots	60	90	120	150	180
					Min:Sec	4:18	2:52	2:09	1:43	1:26

NE-4, 11 JUN 2026 to 09 JUL 2026

NE-4, 11 JUN 2026 to 09 JUL 2026