

COPTER VOR RWY 36

DOTHAN RGNL (DHN)

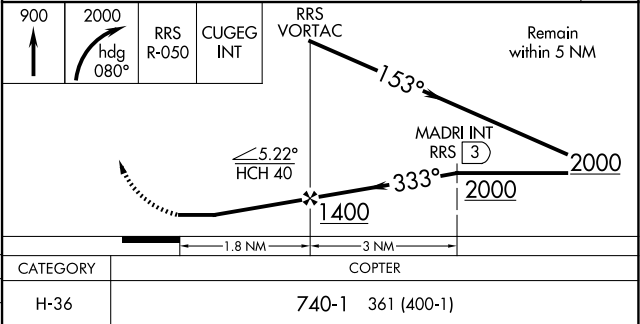
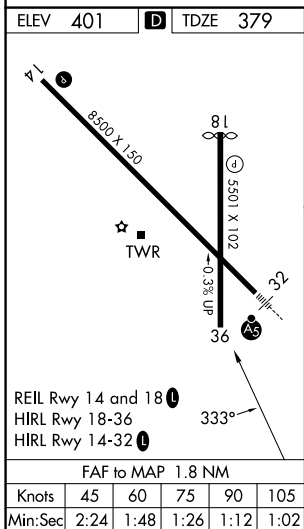
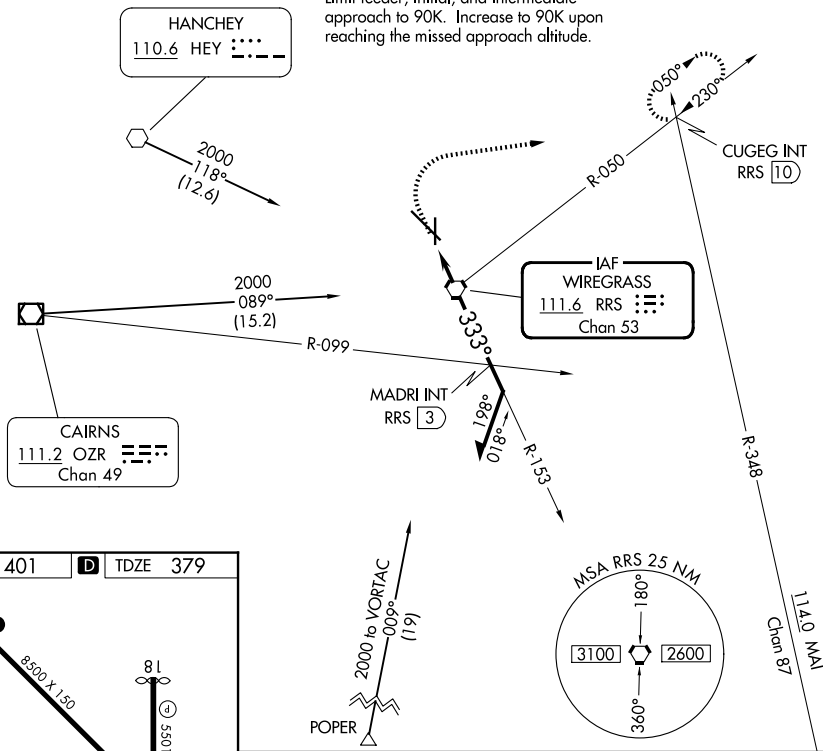
| | | |
|---------------------------------------|------------------------|--|
| VORTAC RRS 111.6 Chan 53 | APP CRS 333° | Rwy Ldg TDZE Apt Elev 5501 379 401 |
|---------------------------------------|------------------------|--|

▼ When local altimeter setting not received, use Cairns AAF (Fort Rucker) altimeter setting and increase all MDA 60 feet.

MISSED APPROACH: Climb to 900 then climbing right turn to 2000 on heading 080° and RRS VORTAC R-050 to CUGEG INT/RRS 10 DME and hold.

| | | | | |
|------------------------|--|---|-------------------------------|-------------------------|
| ATIS 135.725 | CAIRNS APP CON ★ 125.4 327.125 | DOTHAN TOWER ★ 118.4 (CTAF) 257.6 | GND CON 121.7 348.6 | UNICOM 122.95 |
|------------------------|--|---|-------------------------------|-------------------------|

Limit final and missed approach to 70K.
Limit feeder, initial, and intermediate approach to 90K. Increase to 90K upon reaching the missed approach altitude.



SE-4, 11 JUN 2026 to 09 JUL 2026

SE-4, 11 JUN 2026 to 09 JUL 2026