

WAAS CH 45724 W17A	APP CRS 169°	Rwy Ldg TDZE Apt Elev	6065 4760 4760
--	------------------------	-----------------------------	---

RNAV (GPS) RWY 17

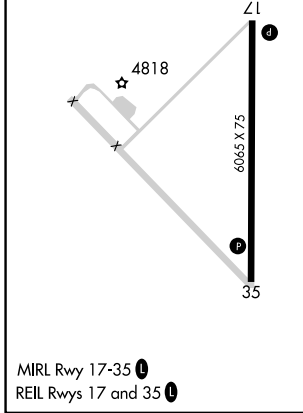
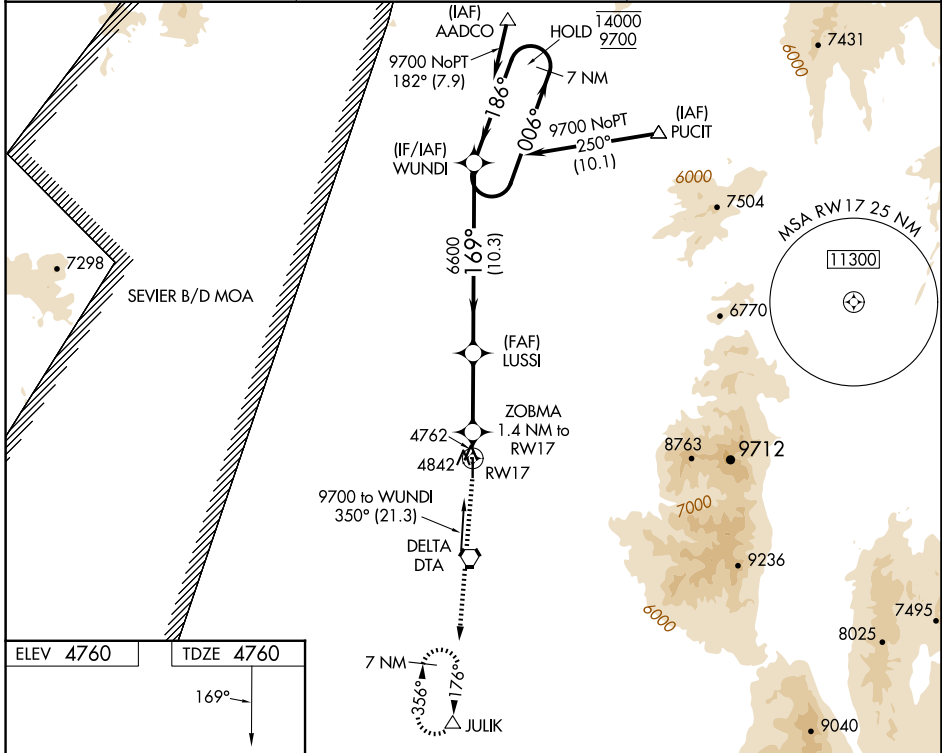
DELTA MUNI (DTA)

RNP APCH-GPS.

▼ Rwy 17 helicopter visibility reduction below 3/4 SM NA. For uncompensated Baro-VNAV systems, LNAV/VNAV NA below -24°C or above 54°C.

MISSED APPROACH: Climb to 5300, then climbing right turn to 12000 direct JULIK and hold, continue climb-in-hold to 12000.

AWOS-3 127.75	SALT LAKE CENTER 127.825 239.025	UNICOM 122.8 (CTAF) 0
-------------------------	--	---------------------------------



5300	12000	JULIK	VGSI and RNAV glidepath not coincident (VGSI Angle 3.00/TCH 48).	7 NM Holding Pattern
↑	↷	△		
ZOBMA 1.4 NM to RWY 17		LUSI 6600	WUNDI	006° → 14000 ← 186° 9700
RWY 17		5240	6600	GP 3.00° TCH 48
-1.4 NM		4.2 NM	10.3 NM	

CATEGORY	A	B	C	D
LPV DA		5010-1	250 (300-1)	
LNAV/VNAV DA		5010-1	250 (300-1)	
LNAV MDA		5100-1	340 (400-1)	

SW-4, 11 JUN 2026 to 09 JUL 2026

SW-4, 11 JUN 2026 to 09 JUL 2026