

LOC I-ATD 108.9	APP CRS 061°	Rwy Ldg TDZE Apt Elev	10900 998 1009
---------------------------	------------------------	-----------------------------	---

ILS or LOC RWY 6L

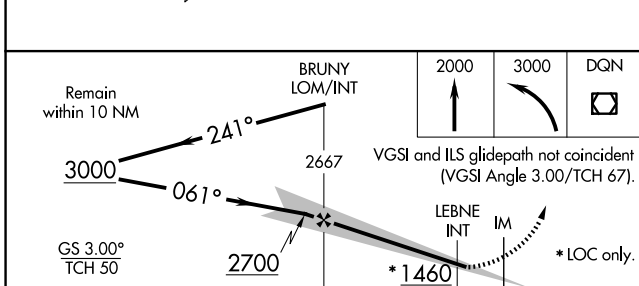
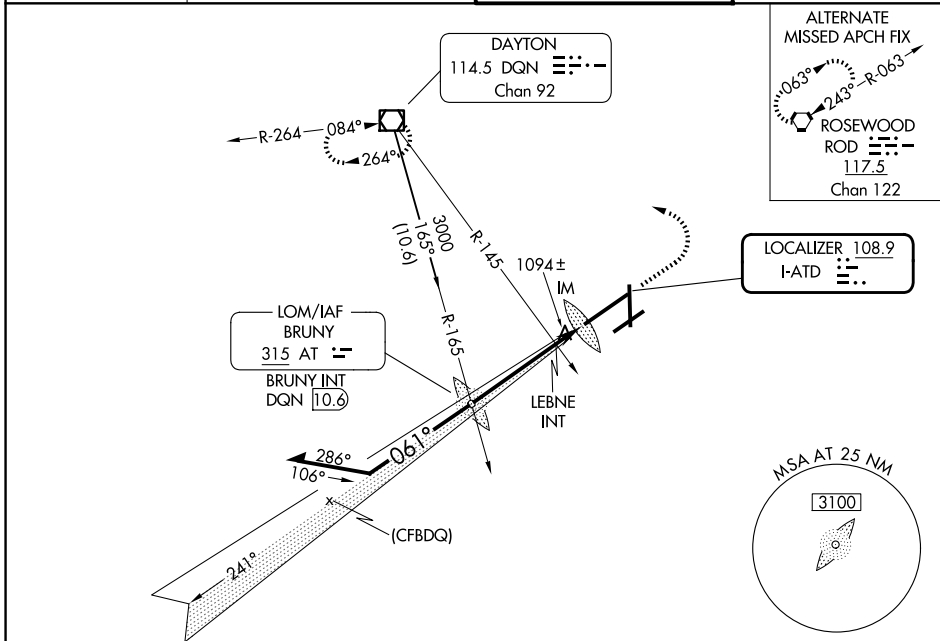
JAMES M COX DAYTON INTL (DAY)

Simultaneous approach authorized.
For inop ALSF-2, increase S-LOC 6L Cat C/D visibility to 1½ mile.

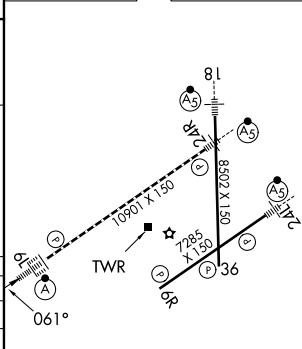
ALSF-2

MISSED APPROACH: Climb to 2000 then climbing left turn to 3000 direct DQN VOR/DME and hold.

ATIS 125.8	COLUMBUS APP CON 118.85 305.2 (091°-180°) 134.45 323.15 (181°-090°)	DAYTON TOWER 119.9 257.7	GND CON 121.9
----------------------	---	------------------------------------	-------------------------



ELEV 1009	D	TDZE 998
-----------	----------	----------



CATEGORY	A	B	C	D
S-ILS 6L	1198/18 200 (200-½)			
S-LOC 6L	1460/24	462 (500-½)	1460/50	462 (500-1)
CIRCLING	1580-1	571 (600-1)	1580-1½	1640-2
			571 (600-1½)	631 (700-2)
LEBNE FIX MINIMUMS (DUAL VOR RECEIVERS REQUIRED)				
S-LOC 6L	1380/24	382 (400-½)	1380/35	382 (400-¾)
CIRCLING	1580-1	571 (600-1)	1580-1½	1640-2
			571 (600-1½)	631 (700-2)

HIRL all Rwys					
TDZL/RCLS Rwy 6L					
REIL Rwys 6R and 36					
FAF to MAP 5 NM					
Knots	60	90	120	150	180
Min:Sec	5:00	3:20	2:30	2:00	1:40

EC-2, 11 JUN 2026 to 09 JUL 2026

EC-2, 11 JUN 2026 to 09 JUL 2026