

LOC I-GJC <b>108.95</b>	APP CRS <b>052°</b>	Rwy Ldg TDZE Apt Elev	<b>7001</b> <b>228</b> <b>236</b>
----------------------------	------------------------	-----------------------------	---

# ILS or LOC RWY 5

COLUMBIA METRO (CAE)

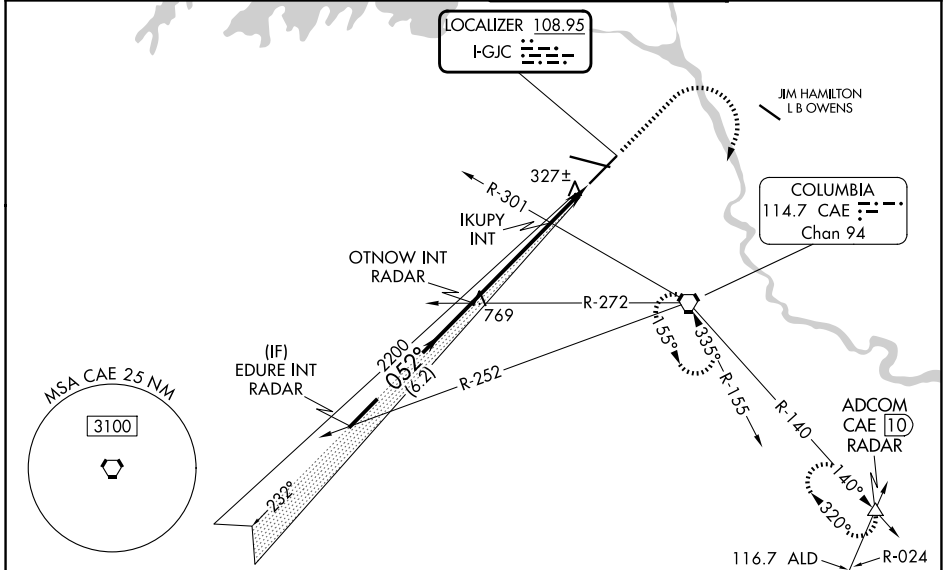
RADAR required for procedure entry.

**⚠** For inop ALS, increase S-ILS 5 Cat E visibility to RVR 4000, increase S-LOC 5 Cats C/D/E visibility to 2 SM and increase IKUPY minimums S-LOC 5 Cats C/D/E visibility to RVR 5500.  
\*RVR 1800 authorized with use of FD or AP or HUD to DA.

MALSR  
As

MISSED APPROACH: Climb to 1500 then climbing right turn to 2300 direct CAE VORTAC and hold, continue climb-in-hold to 2300. (TACAN aircraft continue on CAE VORTAC R-140 to ADCOM INT/CAE VORTAC 10 DME and hold NW, right turn, 140° inbound).

ATIS <b>120.15</b>	COLUMBIA APP CON <b>124.15 338.2</b> (110°-289°) <b>133.4 285.6</b> (290°-109°)	COLUMBIA TOWER <b>119.5 257.8</b>	GND CON <b>121.9 348.6</b>
-----------------------	---	--------------------------------------	-------------------------------



VGSIs and ILS glidepath not coincident (VGSi Angle 3.00/TCH 73). EDURE/INT RADAR      OTNOW/INT RADAR 2200 — 052° — 2200 GS 3.00° TCH 60 6.2 NM      3.9 NM      2.1 NM IKUPY INT 1500      2300      CAE ELEV 236      TDZE 228						
CATEGORY	A	B	C	D	E	
S-ILS 5*	428/24 200 (200-½)					
S-LOC 5	960/24	732 (800-½)	960-1½	732 (800-1½)		
CIRCLING	960-1	724 (800-1)	1040-2¼ 804 (900-2¼)	1040-2½ 804 (900-2½)	1040-2¾ 804 (900-2¾)	
IKUPY FIX MINIMUMS (DUAL VOR RECEIVER REQUIRED)						
S-LOC 5	580/24	352 (400-½)	580/30	352 (400-¾)		
CIRCLING	740-1 504 (600-1)	860-1 624 (700-1)	1040-2¼ 804 (900-2¼)	1040-2½ 804 (900-2½)	1040-2¾ 804 (900-2¾)	
REIL Rwy 23 TDZ/CL Rwy 11 HIRL Rlys 5-23 and 11-29 FAF to MAP 6 NM TWB 8601 X 150 800 X 150 0.5% UP 0.4% DOWN 052°						
Knots		60	90	120	150	180
Min:Sec		6:00	4:00	3:00	2:24	2:00

SE-2, 11 JUN 2026 to 09 JUL 2026

SE-2, 11 JUN 2026 to 09 JUL 2026