

LOC/DME I-LPI 109.1 Chan 28	APP CRS 172°	Rwy Ldg 13500 TDZE 6187 Apt Elev 6187
--	------------------------	--

ILS or LOC RWY 17L

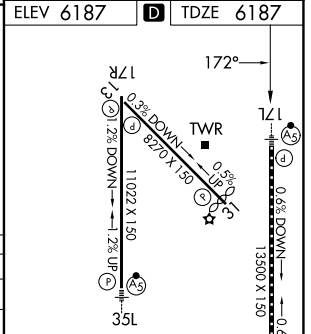
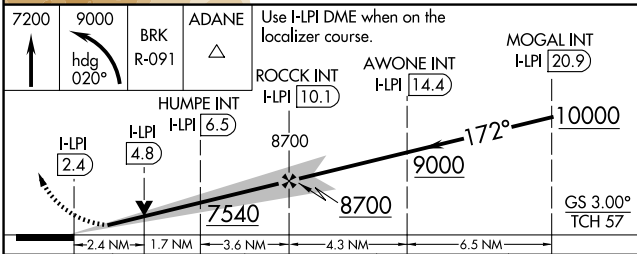
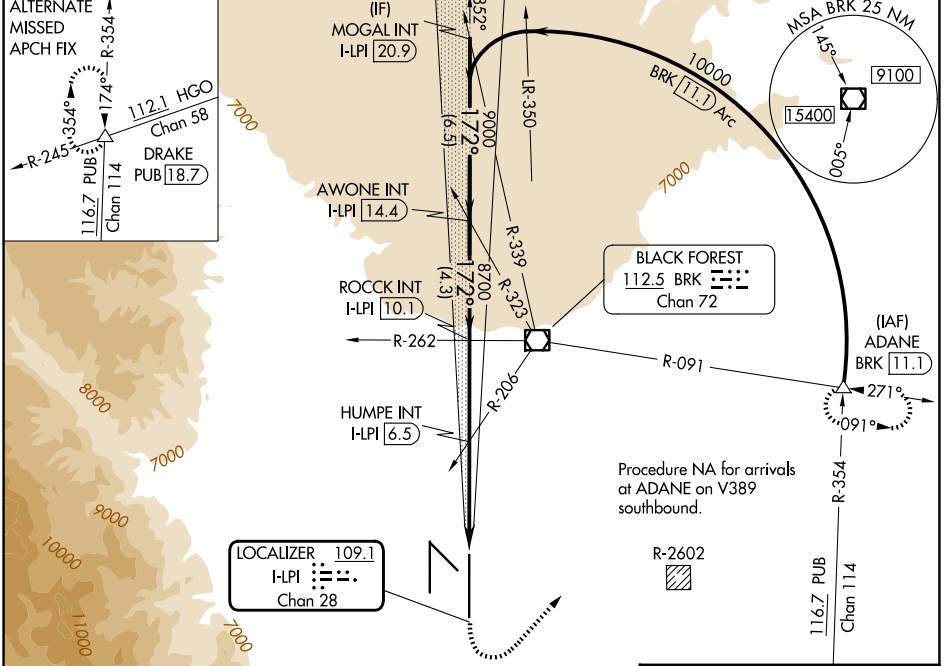
CITY OF COLORADO SPRINGS MUNI (COS)

DME or RADAR required for procedure entry.

MALS R MISSED APPROACH: Climb to 7200 then climbing left turn to 9000 on heading 020° and on BRK VOR/DME R-091 to ADANE INT/BRK VOR/DME 11.1 DME and hold.

Simultaneous approach authorized with Rwy 17R.

ATS 125.0 254.3	SPRINGS APP CON 124.0 257.875	SPRINGS TOWER 119.9 360.6	GND CON 121.7 348.6	CLNC DEL 134.45 363.125
---------------------------	---	-------------------------------------	-------------------------------	-----------------------------------



CATEGORY	A	B	C	D
S-ILS 17L	6387/18		200 (200-½)	
S-LOC 17L	7540/40 1353 (1400-¾)	7540/55 1353 (1400-1)	7540-3	1353 (1400-3)
CIRCLING	7540-1¼ 1353 (1400-1¼)	7540-1½ 1353 (1400-1½)	7540-3	1353 (1400-3)
HUMPE FIX MINIMUMS (DUAL VOR RECEIVERS OR DME REQUIRED)				
S-LOC 17L	7020/24 833 (900-½)	7020/40 833 (900-¾)	7020-1⅞	833 (900-1⅞)
CIRCLING	7020-1¼	833 (900-1¼)	7040-2½ 853 (900-2½)	7260-3 1073 (1100-3)

MIRL Rwy 13-31	35R
HIRL Rwys 17R-35L and 17L-35R	
REIL Rwys 13, 17R, 31 and 35R	
TDZ/CL Rwys 17L and 35R	
FAF to MAP 7.7 NM	
Knots	60 90 120 150 180
Min:Sec	7:42 5:08 3:51 3:05 2:34

SW-1, 11 JUN 2026 to 09 JUL 2026

SW-1, 11 JUN 2026 to 09 JUL 2026