

LOC/DME I-LIZ 111.55 Chan 52(Y)	APP CRS 058°	Rwy Ldg TDZE Apt Elev	6L 9000 773 799	6R 8029 777 799
--	------------------------	-----------------------------	---	---

ILS or LOC RWY 6L

CLEVELAND-HOPKINS INTL (CLE)

From GROHL, HICKR, and KWENE: RNAV 1-DME/DME/IRU or GPS required for procedure entry. Aircraft not DME/DME/IRU or GPS equipped - RADAR required for procedure entry. RNAV 1.

Rwy 6L ALSF-2

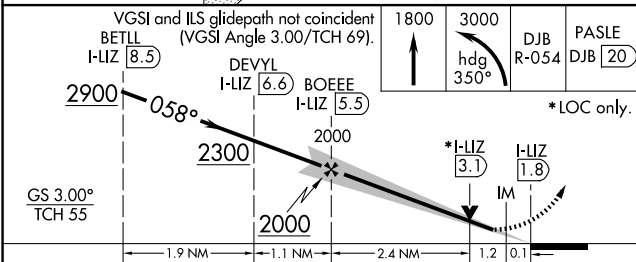
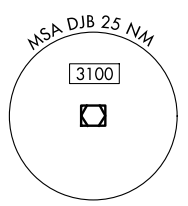
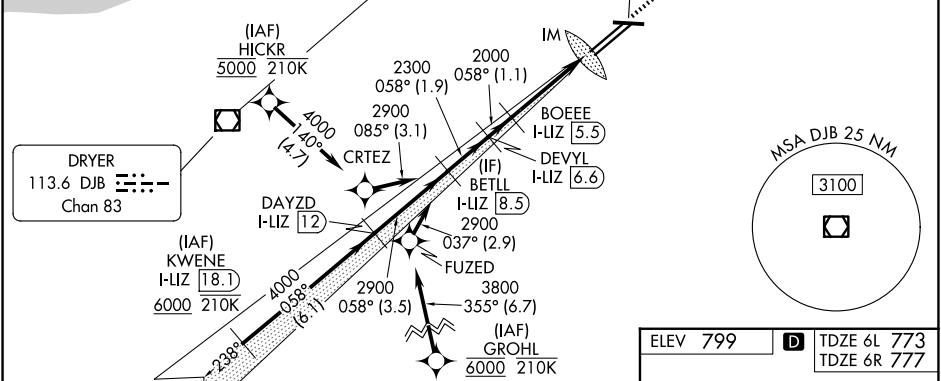
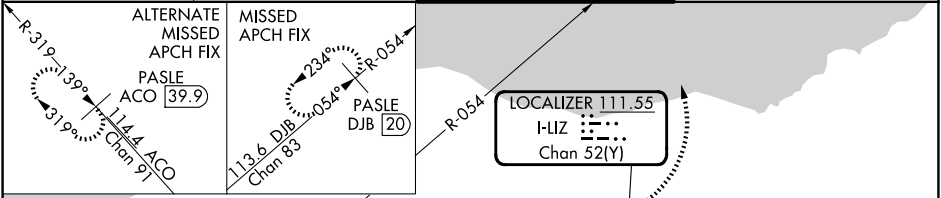
Rwy 6R MALSR

MISSED APPROACH: Climb to 1800 then climbing left turn to 3000 on heading 350° and DJB VOR/DME R-054 to PASLE/DJB 20 DME and hold.

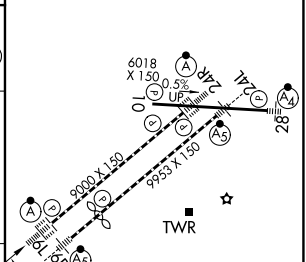
DME required.

⚠ Circling Rwy 10 NA at night. Simultaneous approach authorized. Simultaneous operations require use of vertical guidance; maintain last assigned altitude until established on glideslope. Inop table does not apply to Sidestep 6R. For inop ALS, increase S-LOC 6L Cats C/D visibility to 1 3/8 SM.

D-ATIS 127.85	CLEVELAND APP CON 126.55 346.325	CLEVELAND TOWER 124.5 273.45	GND CON 121.7 273.45
-------------------------	--	--	--------------------------------



ELEV 799	D	TDZE 6L 773	TDZE 6R 777
----------	----------	-------------	-------------



CATEGORY	A	B	C	D
S-ILS 6L		973/18	200 (200-1/2)	
S-LOC 6L	1260/24	487 (500-1/2)	1260/50	487 (500-1)
SIDESTEP 6R	1260/55	483 (500-1)	1260-1 1/2 483 (500-1 1/2)	1260-2 483 (500-2)
CIRCLING	1420-1	621 (700-1)	1420-1 3/4 621 (700-1 3/4)	1420-2 621 (700-2)

REIL Rwy 10
TDZ/CL Rwy 6L, 6R, 24L, and 24R
HIRL Rwy 6L-24R, 6R-24L and 10-28

EC-2, 11 JUN 2026 to 09 JUL 2026

EC-2, 11 JUN 2026 to 09 JUL 2026