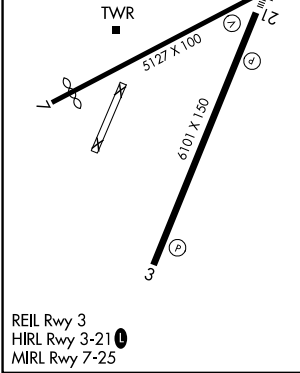
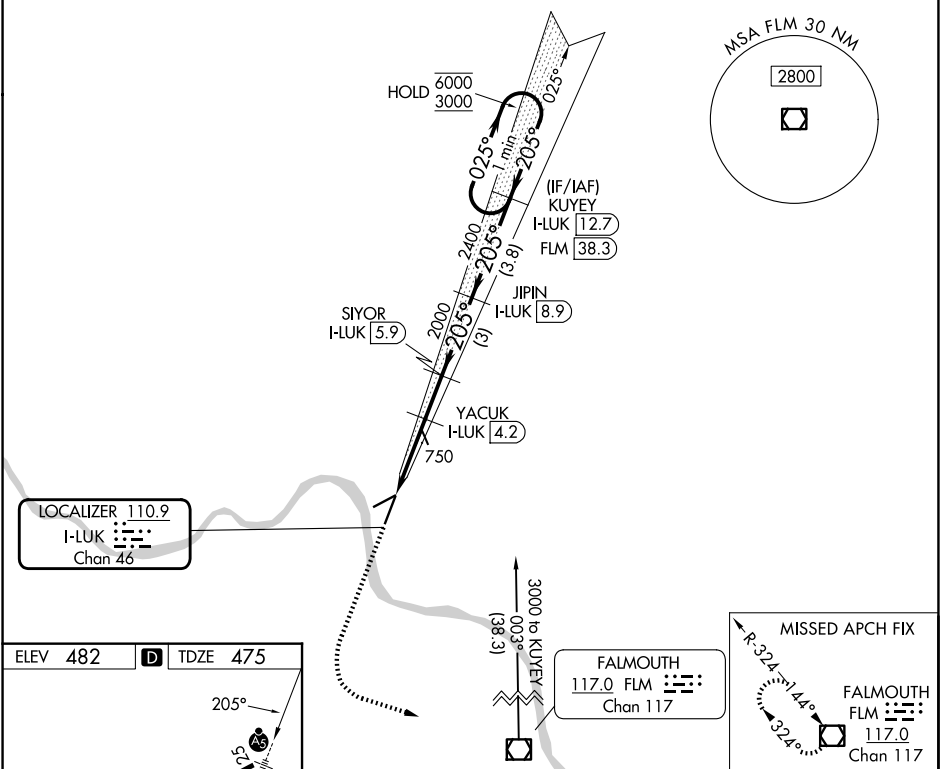


LOC/DME I-LUK	APP CRS	Rwy Ldg TDZE	6101
110.9	205°	Apt Elev	475
Chan 46			482

ILS or LOC RWY 21

CINCINNATI MUNI/LUNKEN FLD (LUK)

DME required.		MALSR	MISSED APPROACH: Climb to 2000 then climbing left turn to 3000 direct FLM VOR/DME and hold.		
<p>Rwy 21 helicopter visibility reduction below RVR 4000 NA. Circling Rwy 7 NA at night. Circling NA for Cat D north of Rwy 7-25. Inop table does not apply to S-ILS 21 all Cats and S-LOC 21 Cats A and B.</p>	<p>ATIS 123.6</p>	<p>CINCINNATI APP CON 121.0 254.25</p>	<p>LUNKEN TOWER ★ 118.7 (CTAF) 257.8</p>	<p>GND CON 121.9</p>	<p>UNICOM 122.95</p>



ELEV 482	D	TDZE 475		
2000	3000	FLM		
↑	↻			
SIYOR I-LUK 5.9	JIPIN I-LUK 8.9	KUYEY I-LUK 12.7	One Minute Holding Pattern	
YACUK I-LUK 4.2	2000	2400	6000	3000
I-LUK 1.2	I-LUK 2.9	1460	2000	GS 3.00° TCH 39
1.7 NM	1.3 NM	1.7 NM	3 NM	3.8 NM
CATEGORY	A	B	C	D
S-ILS 21	797/50		322 (400-1)	
S-LOC 21	1060/50	585 (600-1)	1060-1¼	585 (600-1¼)
CIRCLING	1260-1	1360-1¼	1360-2½	1400-3
	778 (800-1)	878 (900-1¼)	878 (900-2½)	918 (1000-3)

EC-2, 11 JUN 2026 to 09 JUL 2026

EC-2, 11 JUN 2026 to 09 JUL 2026