

CHANUTE, KANSAS

AL-75 (FAA)

25331

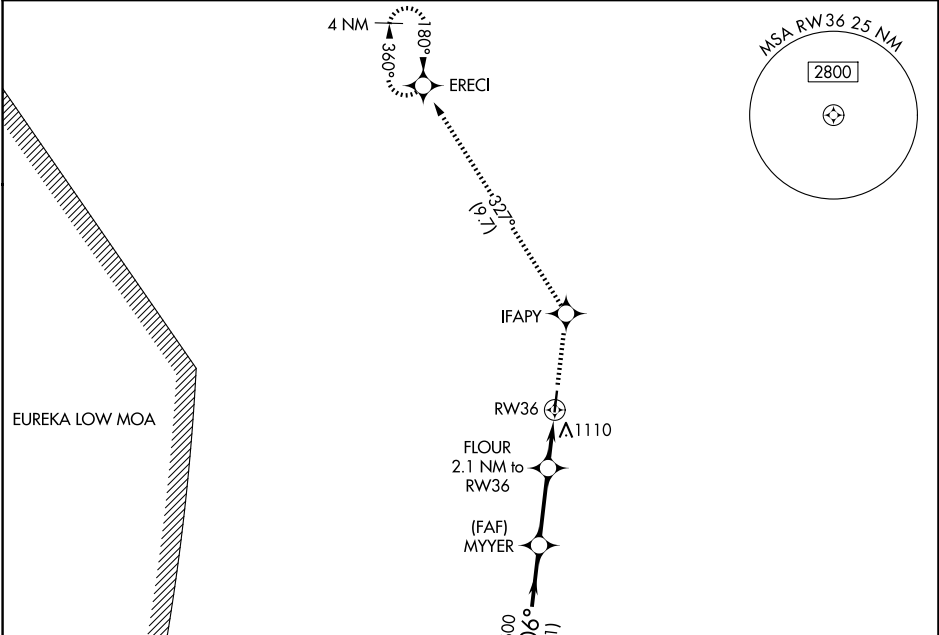
| | | |
|-------------|----------|-------------|
| APP CRS | Rwy Ldg | 3985 |
| 006° | TDZE | 1001 |
| | Apt Elev | 1003 |

RNAV (GPS) RWY 36

CHANUTE MARTIN JOHNSON (CNU)

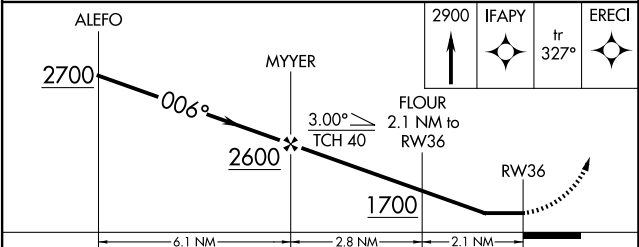
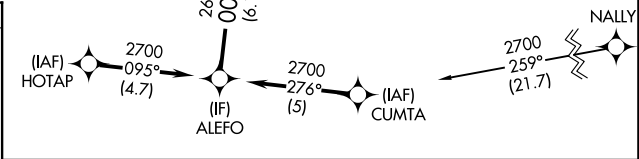
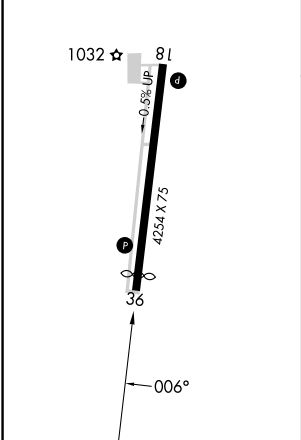
| | |
|---|--|
| RNP APCH - GPS. | MISSED APPROACH: Climb to 2900 direct IFAPY and on track 327° to ERECI and hold. |
| Rwy 36 helicopter visibility reduction below 1 SM NA. Procedure NA at night. | |

| | | |
|------------------------|--|---------------------------------|
| ASOS 127.075 | KANSAS CITY CENTER 132.9 279.5 | UNICOM 122.7 (CTAF) 0 |
|------------------------|--|---------------------------------|



| | |
|-----------|-----------|
| ELEV 1003 | TDZE 1001 |
|-----------|-----------|

MIRL Rwy 18-36
 REIL Rws 18 and 36



| CATEGORY | A | B | C | D |
|----------|-----------------------|-----------------------|----|---|
| LNAV MDA | 1400-1 | 399 (400-1) | NA | |
| CIRCLING | 1480-1 477 (500-1) | 1620-1 617 (700-1) | NA | |

CHANUTE, KANSAS
 Amdt 1 27NOV25

37°40'N-95°29'W

CHANUTE MARTIN JOHNSON (CNU)

RNAV (GPS) RWY 36

NC-2, 11 JUN 2026 to 09 JUL 2026

NC-2, 11 JUN 2026 to 09 JUL 2026