

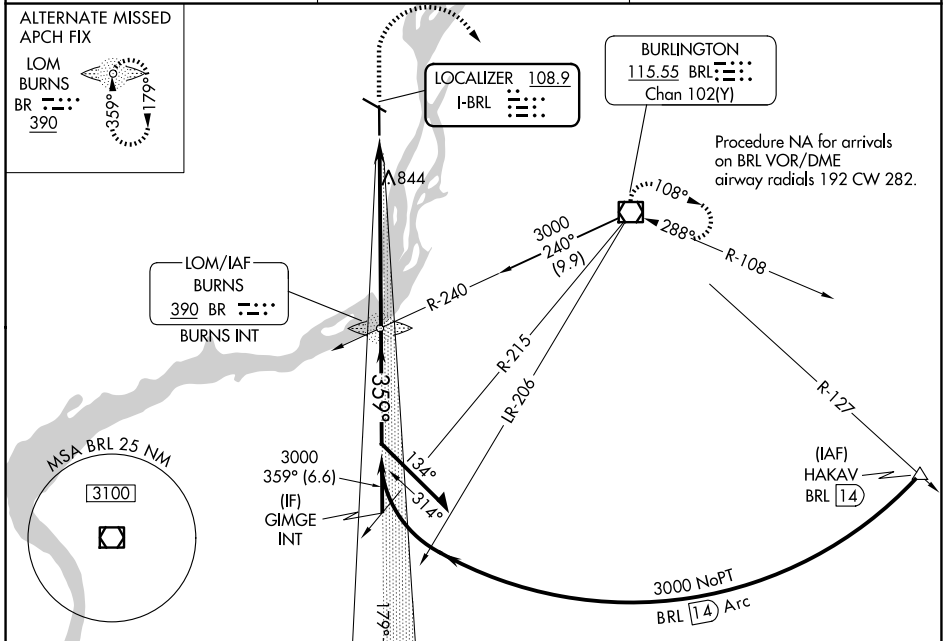
LOC I-BRL <b>108.9</b>	APP CRS <b>359°</b>	Rwy Ldg TDZE Apt Elev	<b>6102</b> <b>694</b> <b>698</b>
---------------------------	------------------------	-----------------------------	---

# ILS or LOC RWY 36

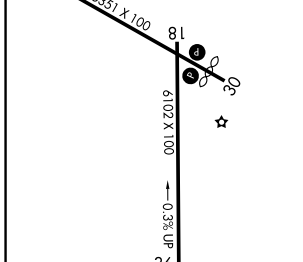
SOUTHEAST IOWA RGNL (B.R.L)

V NA	MALSR 	MISSED APPROACH: Climb to 2800 then climbing right turn to 3000 direct BRL VOR/DME and hold.
		Procedure NA for arrivals on BRL VOR/DME airway radials 192 CW 282.

ASOS <b>118.025</b>	CHICAGO CENTER <b>135.6 370.95</b>	UNICOM <b>123.0 (CTAF)</b>
------------------------	---------------------------------------	-------------------------------



ELEV 698	D	TDZE 694
REIL Rwy 12, 18 and 30 MIRL Rwy 12-30 HIRL Rwy 18-36		



CATEGORY	A	B	C	D
S-ILS 36	894-1/2 200 (200-1/2)			
S-LOC 36	1140-1/2 446 (500-1/2)	1140-7/8 446 (500-7/8)	1140-1 446 (500-1)	
CIRCLING	1180-1 482 (500-1)	1380-2 682 (700-2)	1380-2 1/4 682 (700-2 1/4)	

BURLINGTON, IOWA  
Amdt 10C 20JUN19

40°47'N-91°08'W

# SOUTHEAST IOWA RGNL (B.R.L)

## ILS or LOC RWY 36

NC-3, 11 JUN 2026 to 09 JUL 2026

NC-3, 11 JUN 2026 to 09 JUL 2026