

APP CRS	Rwy Ldg	<b>3787</b>
<b>202°</b>	TDZE	<b>4152</b>
	Apt Elev	<b>4154</b>

# RNAV (GPS) RWY 20

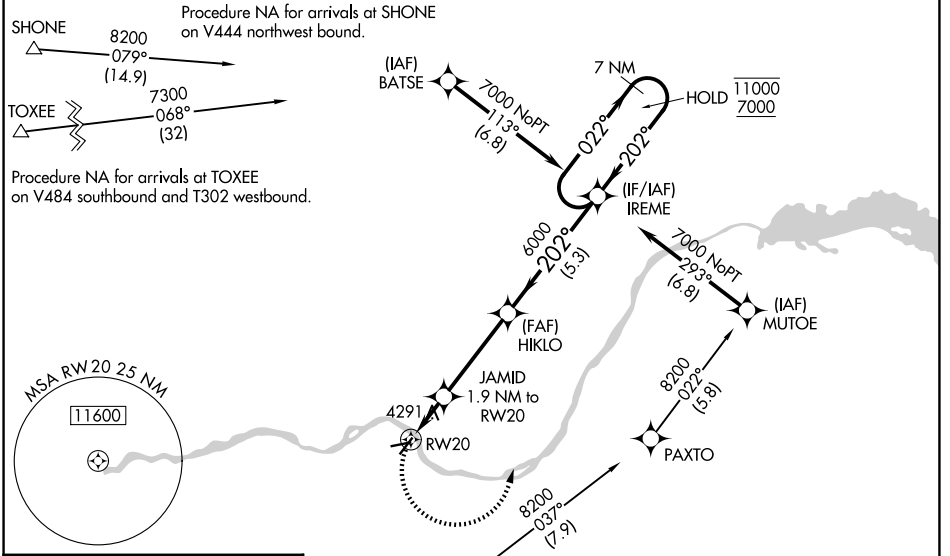
BURLEY MUNI (BYI)

**RNP APCH-GPS.**

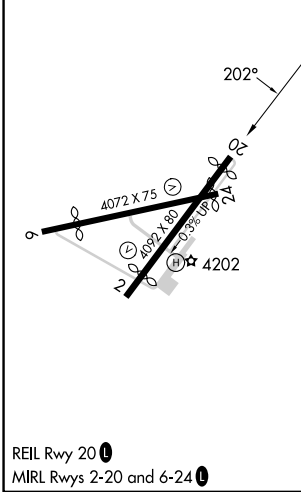
**Procedure NA at night. Rwy 20 helicopter visibility reduction below 1 SM NA. When local altimeter setting not received, use TWF altimeter setting and increase all MDAs 80 feet and LNAV visibility Cats C 1/8 SM, and Circling visibility Cat C 1/4 SM. Exhaust stacks located along Rwy 20 extended final approach course approximately 2345 feet from approach end. When Circling Rwy 20, exhaust stacks located along Rwy 20 extended final approach course approximately 2345 feet from approach end.**

**MISSED APPROACH:** Climbing left turn to 7000 direct IREME and hold, continue climb-in-hold to 7000.

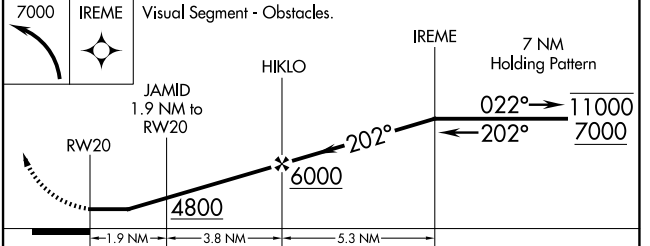
ASOS <b>135.575</b>	TWIN FALLS APP CON * <b>126.7 353.75</b>	CTAF <b>122.90</b>
------------------------	---	-----------------------



ELEV 4154	TDZE 4152
-----------	-----------



Procedure NA for arrivals at MALTT on V101 northwest bound.



CATEGORY	A	B	C	D
LNAV MDA	4600-1	448 (500-1)	4600-1 3/8 448 (500-1 3/8)	NA
CIRCLING	4640-1 486 (500-1)	4660-1 506 (600-1)	4740-1 1/2 586 (600-1 1/2)	NA

NW-1, 11 JUN 2026 to 09 JUL 2026

NW-1, 11 JUN 2026 to 09 JUL 2026