

LOC/DME I-BOS 110.3 Chan 40	APP CRS 035°	Rwy Ldg 8851 TDZE 18 Apt Elev 19
---	------------------------	---

ILS or LOC RWY 4R

GENERAL EDWARD LAWRENCE LOGAN INTL (BOS)

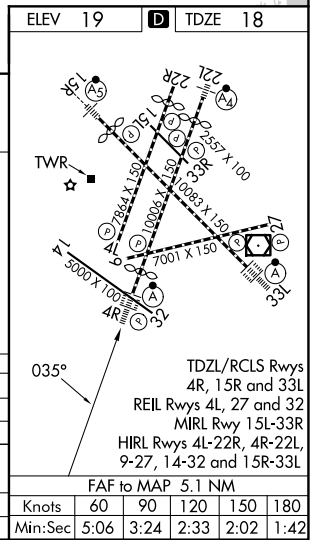
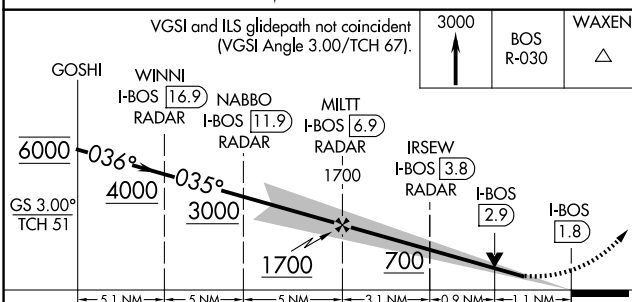
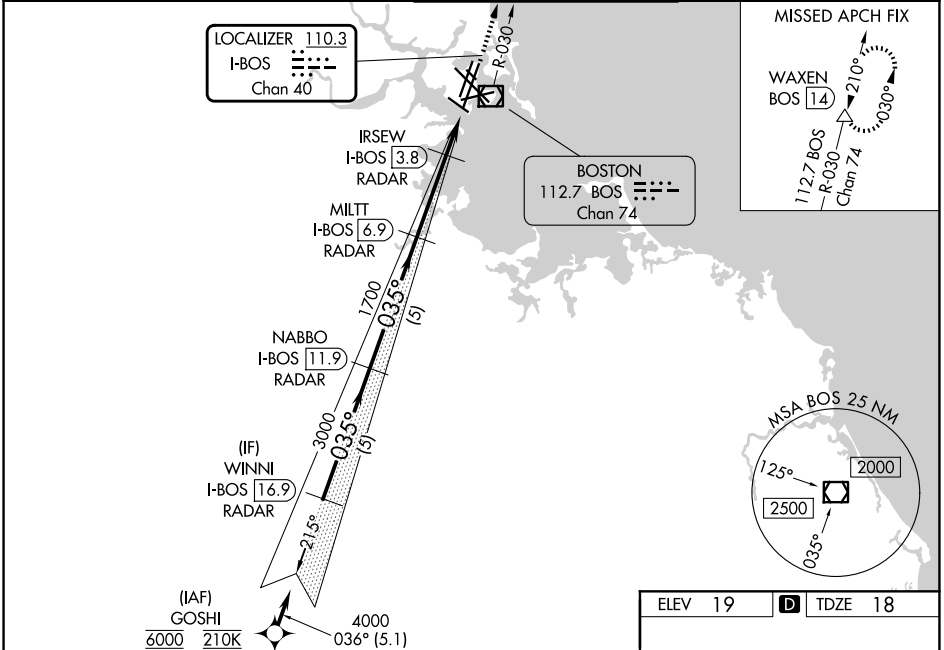
RNP APCH - GPS. From GOSHI.
DME required.

ALSIF-2
(A)

MISSED APPROACH:
Climb to 3000 on BOS VOR/DME R-030 to WAXEN/BOS 14 DME and hold.

Simultaneous approach authorized. Simultaneous operations require use of vertical guidance; maintain last assigned altitude until established on glideslope. Use of FD or AP required during simultaneous operations. LOC procedure NA during simultaneous operations. * For inop ALS increase S-LOC 4R Cat A/B visibility to RVR 5500. # When vessels taller than 144 feet present, S-ILS 4R NA.

D-ATIS 135.0	BOSTON APP CON 120.6 263.1	BOSTON TOWER 128.8 257.8 (WEST) 132.225 257.8 (EAST)	GND CON 121.75 121.9
------------------------	--------------------------------------	--	--------------------------------



VGSI and ILS glidepath not coincident (VGSI Angle 3.00/TCH 67).	3000	BOS R-030	WAXEN
GOSHI	WINNI I-BOS 16.9	NABBO I-BOS 11.9	MILTT I-BOS 6.9
IRSEW I-BOS 3.8	BOS I-BOS 2.9	I-BOS 1.8	
6000	4000	3000	1700
GS 3.00° TCH 51			700
	5.1 NM	5 NM	5 NM
		3.1 NM	0.9 NM
			1.1 NM
CATEGORY	A	B	C
S-ILS 4R		218/18	200 (200-½)
S-LOC 4R	440/24	422 (500-½)	440/40 422 (500-¾)
# APPROACH MINIMA WHEN CONTROL TOWER REPORTS TALL VESSELS IN APPROACH AREA			
S-ILS 4R		374/40	356 (400-¾)
S-LOC 4R*		440/40	422 (500-¾)

ELEV 19				D				TDZE 18			
TWR											
TDZL/RCLS Rwy 4R, 15R and 33L											
REIL Rwy 4L, 27 and 32											
MIRL Rwy 15L-33R											
HIRL Rwy 4L-22R, 4R-22L, 9-27, 14-32 and 15R-33L											
FAF to MAP 5.1 NM											
Knots		60	90	120	150	180					
Min:Sec		5:06	3:24	2:33	2:02	1:42					

NE-1, 11 JUN 2026 to 09 JUL 2026

NE-1, 11 JUN 2026 to 09 JUL 2026