

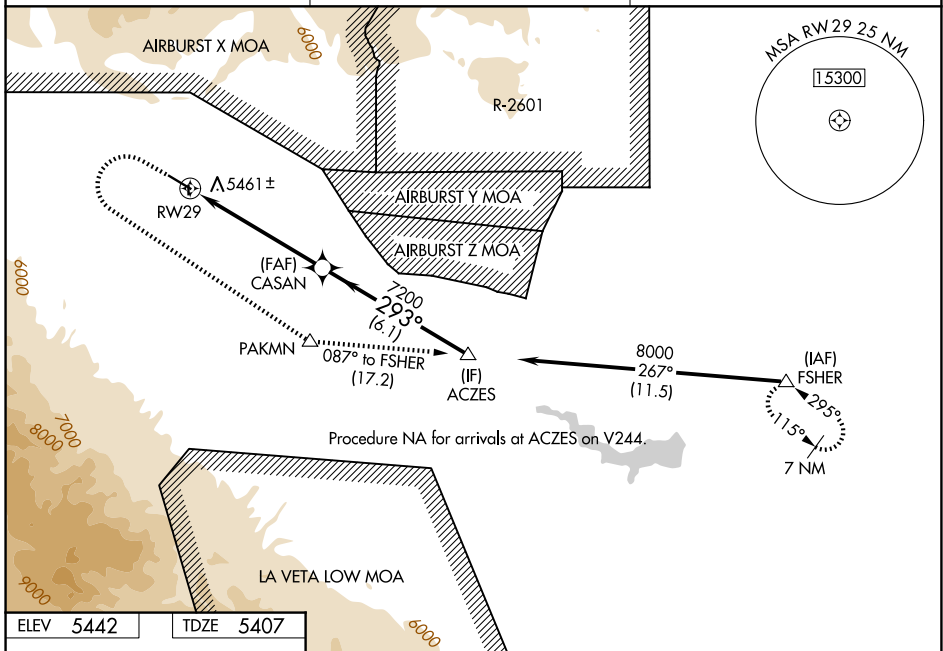
WAAS CH <b>69530</b> <b>W29A</b>	APP CRS <b>293°</b>	Rwy Ldg TDZE Apt Elev	<b>5399</b> <b>5407</b> <b>5442</b>
--	------------------------	-----------------------------	---

# RNAV (GPS) RWY 29

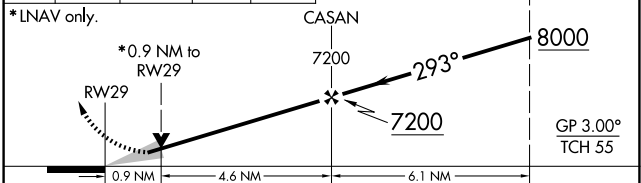
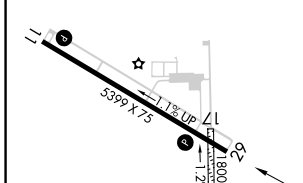
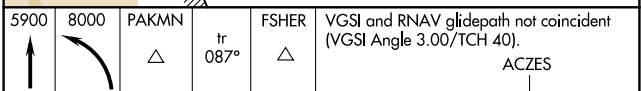
FREMONT COUNTY (1V6)

RNP APCH. ▼ For uncompensated Baro-VNAV systems, LNAV/VNAV NA below -25°C or above 54°C. Circling NA north of Rwy 11-29. Circling NA to Rwy 35.	MISSED APPROACH: (Do not exceed 210K until PAKMN) Climb to 5900 then climbing left turn to 8000 direct PAKMN and track 087° to FSHER and hold.
--	--

AWOS-3PT <b>120.025</b>	DENVER APP CON * <b>120.1 290.5</b>	UNICOM <b>122.8</b> (CTAF) <b>0</b>
----------------------------	--	--



ELEV <b>5442</b>	TDZE <b>5407</b>
------------------	------------------



	A	B	C	D
CATEGORY	A	B	C	D
LPV DA	5657-¾ 250 (300-¾)			NA
LNAV/VNAV DA	5657-¾ 250 (300-¾)			NA
LNAV MDA	5720-1	313 (300-1)	5720-7/8 313 (300-7/8)	NA
CIRCLING	5800-1 358 (400-1)	5900-1 458 (500-1)	5980-1½ 538 (600-1½)	NA

SW-1, 11 JUN 2026 to 09 JUL 2026

SW-1, 11 JUN 2026 to 09 JUL 2026