

BANGOR, MAINE

# HI-ILS Z or LOC Z RWY 15

LOC/DME I-JVH <b>109.5</b> Chan <b>32</b>	APCH CRS <b>150°</b>	Rwy Ildg <b>11,440</b> TDZE <b>192</b> Arprt Elev <b>192</b>
---	-------------------------	--

[USAF]

BANGOR INTL (KBGR)

DME required

ALSF-2

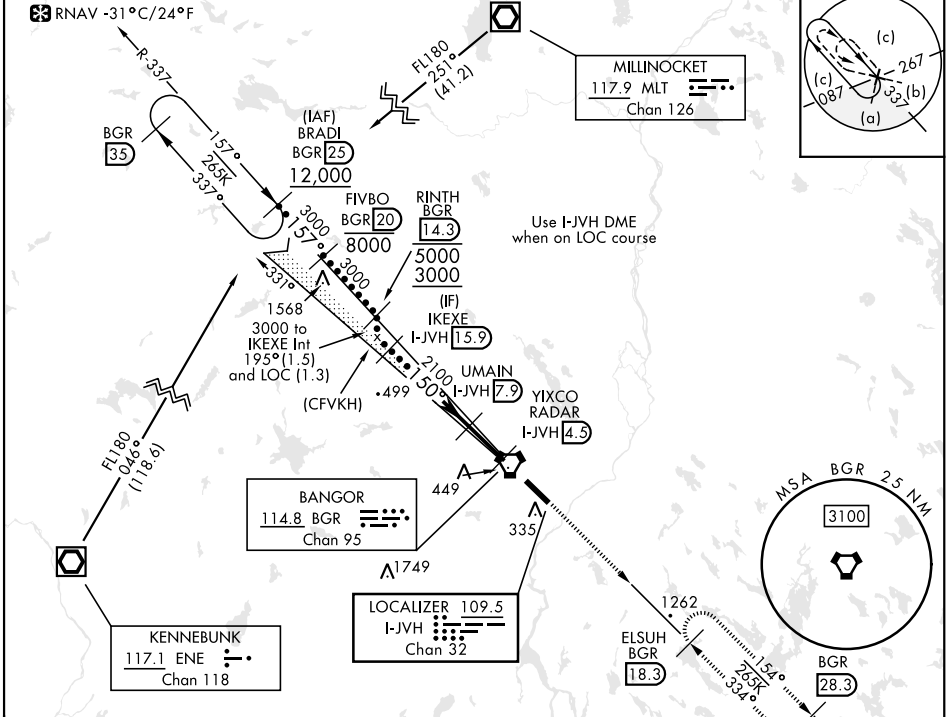
MISSED APPROACH: Climb to 3000 via heading 150° and BGR VORTAC R-154 to ELSUH (R-154/18.3 DME) and hold.

▼ \* When ALS inop, increase CAT E RVR to 40.  
\*\* When ALS inop, increase CAT CDE vis to 1 3/8 miles.

ATIS <b>127.75</b>	APP CON <b>118.925 239.3</b>	TOWER <b>120.7 233.7</b>	GND CON <b>121.9 348.6</b>	ASR
-----------------------	---------------------------------	-----------------------------	-------------------------------	-----

\*\*\* Circling not authorized NE of Rwy 15-33.

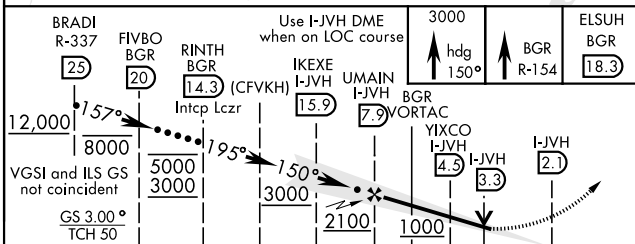
RNAV -31° C/24° F



NE-1, 11 JUN 2026 to 09 JUL 2026

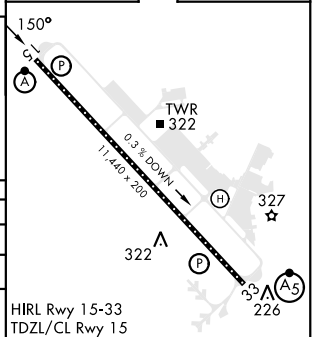
NE-1, 11 JUN 2026 to 09 JUL 2026

EMERG SAFE ALT 100 NM 7500



ELEV	192	TDZE	192
------	-----	------	-----

CATEGORY	C	D	E
S-ILS 15*	392/18	200 (200-1/2)	
S-LOC 15**	660/50	468 (500-1)	
CIRCLING***	740-1 1/2	820-2	880-2 1/2
	548 (600-1 1/2)	628 (700-2)	688 (700-2 1/2)



BANGOR, MAINE

44°48'N-68°50'W

BANGOR INTL (KBGR)

Amrd 2 02DEC21

# HI-ILS Z or LOC Z RWY 15