

LOC I-LJU 108.5	APP CRS 245°	Rwy Ldg TDZE Apt Elev	11801 624 633
---------------------------	------------------------	-----------------------------	--


ILS or LOC RWY 25

OSCODA/WURTSMITH (OSC)

DME required.

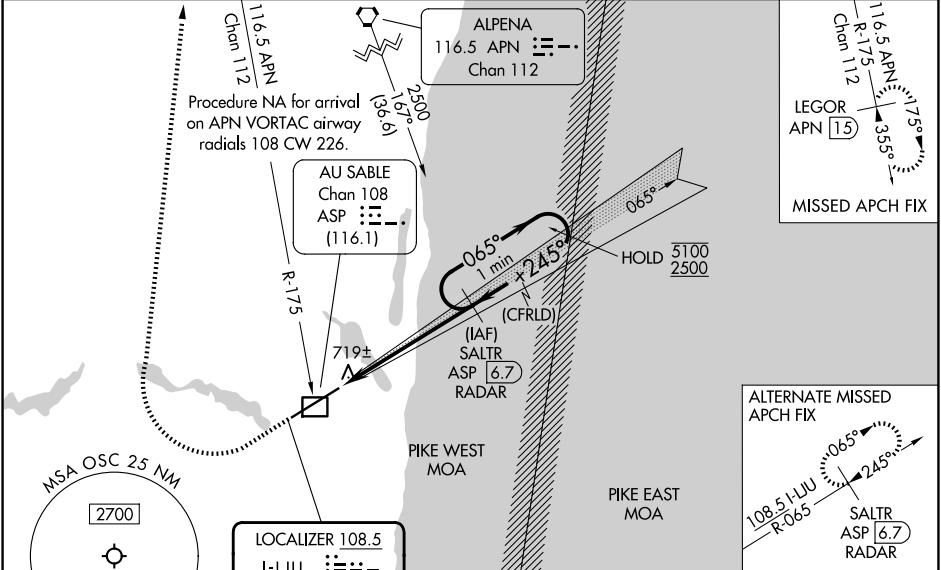
NA Circling NA southeast of Rwy 7-25. For inop ALS, increase S-LOC Cats C and D visibility to 1 SM. DME from ASP DME. Simultaneous reception of I-LJU and ASP DME required.

MALSR



MISSED APPROACH: Climb to 1300 then climbing right turn to 3000 on heading 030° and an APN VORTAC R-175 to LEGOR/APN 15 DME and hold.

AWOS-3P 118.7	MINNEAPOLIS CENTER 125.475 269.45	UNICOM 123.0 (CTAF) 0
-------------------------	---	---------------------------------



ELEV 633	TDZE 624
----------	----------

1300 3000

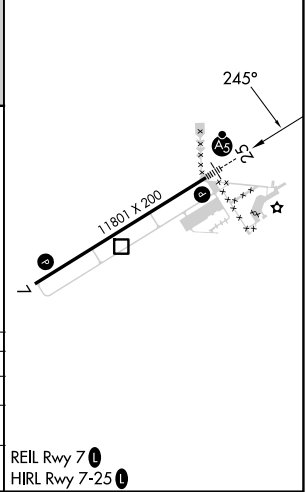
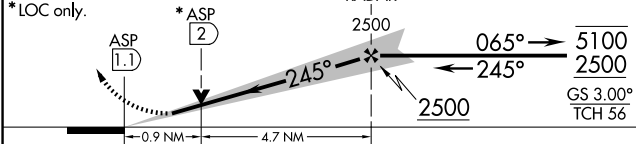
hdg 030° APN R-175

LEGOR APN 15

VGSI and ILS glidepath not coincident (VGSI angle 3.00/TCH 72).

One Minute Holding Pattern

SALTR ASP 6.7 RADAR



CATEGORY	A	B	C	D
S-ILS 25	824-1/2 200 (200-1/2)			
S-LOC 25	980-1/2 356 (400-1/2)		980-5/8 356 (400-5/8)	
CIRCLING	1140-1 507 (600-1)		1160-1 1/2 527 (600-1 1/2)	1300-2 667 (700-2)

EC-1, 11 JUN 2026 to 09 JUL 2026

EC-1, 11 JUN 2026 to 09 JUL 2026