

WAAS CH <b>65842</b> <b>W05A</b>	APP CRS <b>047°</b>	Rwy Ldg TDZE Apt Elev	<b>3800</b> <b>411</b> <b>422</b>
--	------------------------	-----------------------------	---

# RNAV (GPS) RWY 5

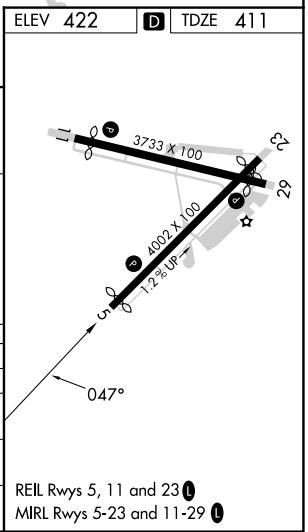
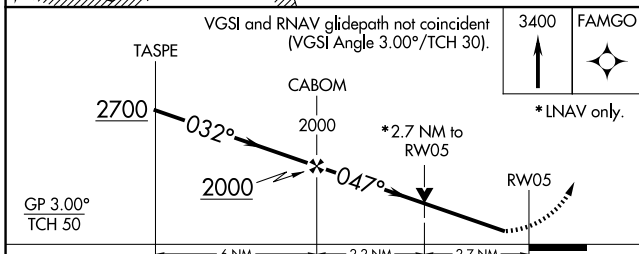
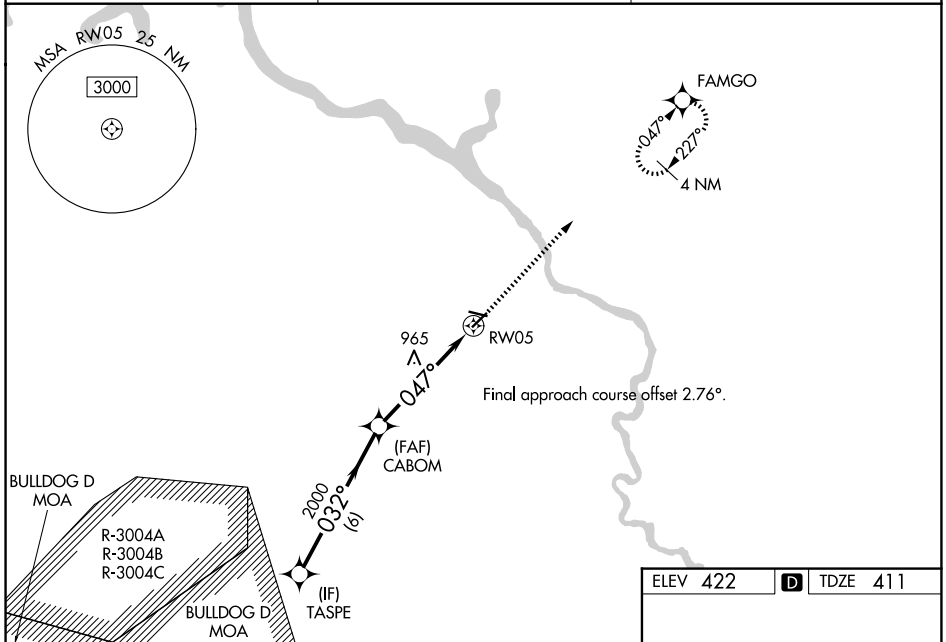
DANIEL FLD (DNL)

RNP APCH.

**⚠** Baro-VNAV and VDP NA when using Augusta Rgnl at Bush Fld altimeter setting. Rwy 5 helicopter visibility reduction below  $\frac{3}{4}$  SM NA. For uncompensated Baro-VNAV systems, LNAV/VNAV NA below  $-15^{\circ}\text{C}$  or above  $54^{\circ}\text{C}$ . When local altimeter not received use Augusta Rgnl at Bush Fld altimeter setting: Increase LPV DA to 716 feet, LNAV/VNAV DA to 1496 feet and all MDA 60 feet; Increase LPV all Cats visibility  $\frac{1}{2}$  SM, LNAV Cat A and Circling Cat C visibility  $\frac{1}{4}$  SM.

MISSED APPROACH: Climb to 3400 direct FAMGO and hold, continue climb-in-hold to 3400.

ASOS <b>135.275</b>	AUGUSTA APP CON * <b>126.8 270.3</b>	UNICOM <b>123.05 (CTAF) ①</b>
------------------------	---	----------------------------------



CATEGORY	A	B	C	D
LPV DA		661- $\frac{3}{4}$	250 (300- $\frac{3}{4}$ )	
LNAV/VNAV DA		1441-4	1030 (1100-4)	
LNAV MDA	1280-1 869 (900-1)	1280-1 $\frac{1}{4}$ 869 (900-1 $\frac{1}{4}$ )	1280-2 $\frac{1}{2}$	869 (900-2 $\frac{1}{2}$ )
CIRCLING	1280-1 $\frac{1}{4}$	858 (900-1 $\frac{1}{4}$ )	1360-2 $\frac{3}{4}$ 938 (1000-2 $\frac{3}{4}$ )	1360-3 938 (1000-3)

SE-4, 11 JUN 2026 to 09 JUL 2026

SE-4, 11 JUN 2026 to 09 JUL 2026