

AMARILLO, TEXAS

HI-VOR or TACAN RWY 4

VORTAC PNH 116.6 Chan 113	APCH CRS 037°	Rwy Idg 13,502 TDZE 3607 Arprt Elev 3607	[USAF]	RICK HUSBAND AMARILLO INTL (KAMA)
---	-------------------------	---	--------	-----------------------------------

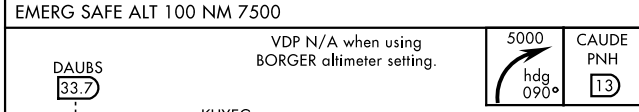
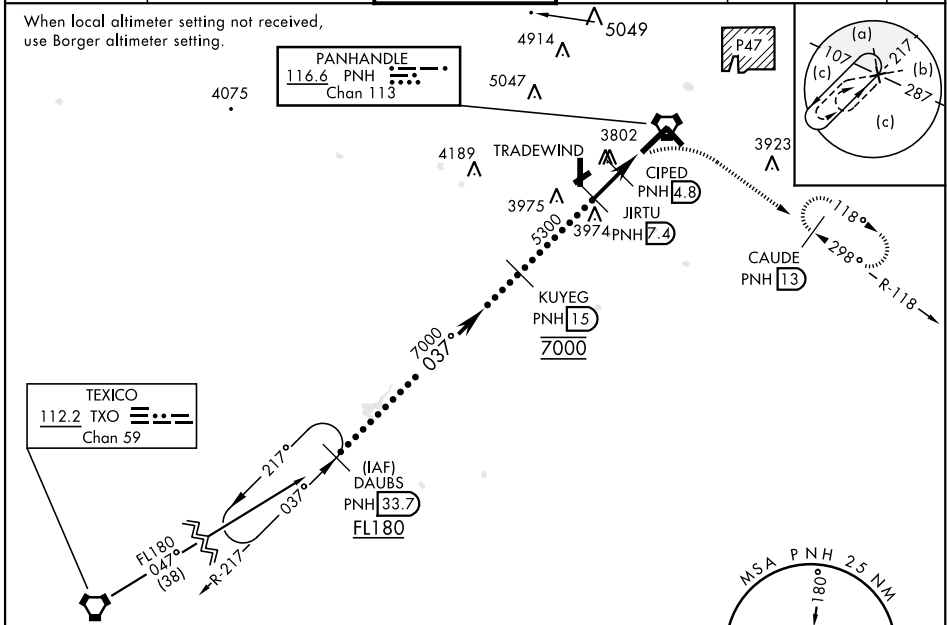
DME required

▼ * When ALS inop, increase CAT D vis to 1½ miles;
 CAT E vis to 1½ miles.
 ** When ALS inop, increase CAT CD vis to 1½ miles;
 CAT E vis to 1¾ miles.

MALSR A5

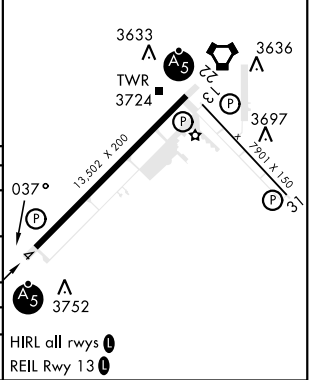
MISSED APPROACH: Climbing right turn to 5000 on heading 090° and PNH VORTAC R-118 to CAUDE/PNH 13 DME and hold.

ATIS 118.85 350.3	AMARILLO APP CON 119.5 307.0	AMARILLO TOWER * 118.3 (CTAF) 0 257.9	GND CON 121.9 348.6	CLNC DEL 121.65 239.275	ASR
-----------------------------	--	---	-------------------------------	-----------------------------------	-----



ELEV	3607	TDZE	3607
------	------	------	------

CATEGORY	C	D	E
S-4 *	4040/40 433 (500-¾)	4040/50 433 (500-1)	
C CIRCLING	4240-1¾ 633 (700-1¾)	4280-2¼ 673 (700-2¼)	4460-3 853 (900-3)
BORGER ALTIMETER SETTING			
S-4 **	4200-1¼	593	(600-1¼)
C CIRCLING	4400-2¼ 793 (900-2¼)	4440-2¾ 833 (900-2¾)	4620-3 1013 (1100-3)



AMARILLO, TEXAS 35°13'N-101°42'W RICK HUSBAND AMARILLO INTL (KAMA)

HI-VOR or TACAN RWY 4

SC-2, 11 JUN 2026 to 09 JUL 2026

SC-2, 11 JUN 2026 to 09 JUL 2026

