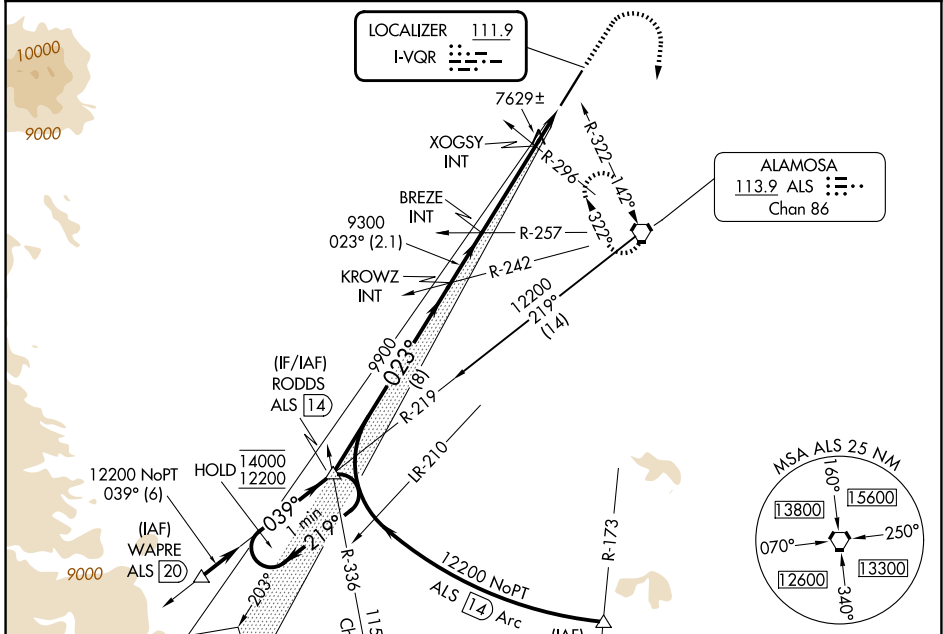


LOC I-VQR <b>111.9</b>	APP CRS <b>023°</b>	Rwy Ldg <b>8519</b> TDZE <b>7540</b> Apt Elev <b>7540</b>
---------------------------	------------------------	--

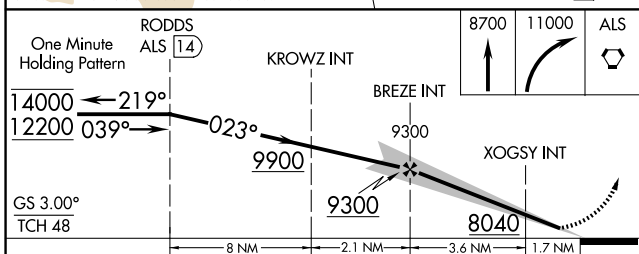
**ILS or LOC RWY 2**  
SAN LUIS VALLEY RGNL/BERGMAN FLD (ALS)

<p><b>NA</b> For inop ALS, increase S-LOC 2 Cats C/D visibility to 1 3/8 SM.</p> <p><b>-25°C</b></p>	<p><b>MALSR</b></p>	<p><b>MISSED APPROACH:</b> Climb to 8700 then climbing right turn to 11000 direct ALS VORTAC and hold, continue climb in hold to 11000.</p>
--	---------------------	---

<b>ASOS</b> <b>135.175</b>	<b>DENVER CENTER</b> <b>128.375 379.95</b>	<b>UNICOM</b> <b>122.8 (CTAF)</b>
-------------------------------	---	--------------------------------------



Procedure NA for arrivals at WAPRE on V368 southwest bound.



One Minute Holding Pattern	RODDS ALS 14	KROWZ INT	BREZE INT	XOGSY INT	ALS
GS 3.00° TCH 48	14000 ← 219°	12200 ← 039°	9900	9300	8040
CATEGORY	A	B	C	D	
S-ILS 2	7740-1/2		200 (200-1/2)		
S-LOC 2	8040-1/2 500 (500-1/2)		8040-1 500 (500-1)		
CIRCLING	8040-1 500 (500-1)		8080-1 1/2 540 (600-1 1/2)		8100-2 560 (600-2)
XOGSY FIX MINIMUMS (DUAL VOR RECEIVERS REQUIRED)					
S-LOC 2	7880-1/2		340 (400-1/2)		
CIRCLING	8040-1 500 (500-1)		8080-1 1/2 540 (600-1 1/2)		8100-2 560 (600-2)

ELEV 7540 **D** TDZE 7540

REIL Rwy 20 **I**  
HIRL Rwy 2-20 **I**

FAF to MAP 5.4 NM					
Knots	60	90	120	150	180
Min:Sec	5:24	3:36	2:42	2:10	1:48

SW-1, 11 JUN 2026 to 09 JUL 2026

SW-1, 11 JUN 2026 to 09 JUL 2026