


LOC/DME I-ABI 110.3 Chan 40	APP CRS 355°	Rwy Ldg TDZE 7198 1776 Apt Elev 1791
--	------------------------	--

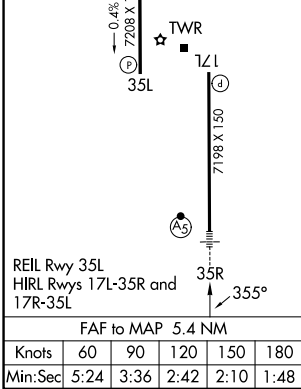
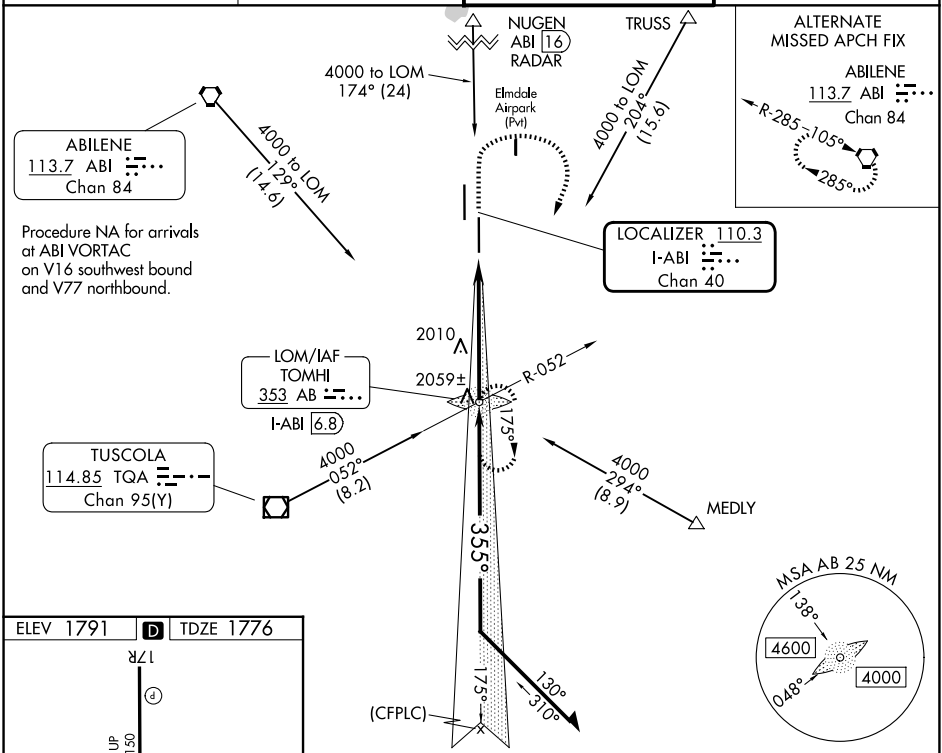
ILS or LOC RWY 35R

ABILENE RGNL (ABI)

ADF required. RADAR required for procedure entry at NUGEN.
 For inop ALS, increase S-ILS 35R Cat E visibility to RVR 4000, and S-LOC 35R Cat C/D/E visibility to 1 3/8 SM.
 ** RVR 1800 authorized with use of FD or AP or HUD to DA.

MALSR

 MISSED APPROACH: Climb to 3300 then climbing right turn to 4000 direct TOMHI LOM/INT/I-ABI 6.8 DME and hold.

ATIS 118.25	ABILENE APP CON 125.0 338.3 (E) 127.2 282.3 (W)	ABILENE TOWER 120.1 257.8	GND CON 121.7 348.6
-----------------------	---	-------------------------------------	-------------------------------



3300	4000	TOMHI	TOMHI LOM/INT I-ABI 6.8	Remain within 15 NM	
*LOC only.			3573	GS 3.00° TCH 58	
I-ABI 1.4		I-ABI 2.7	I-ABI 6.8		
1.3		4.1 NM			
CATEGORY	A	B	C	D	E
S-ILS 35R**	1976/24		200 (200-1/2)		
S-LOC 35R	2260/24	484 (500-1/2)	2260/50 484 (500-1)		
CIRCLING	2300-1 509 (600-1)	2320-1 529 (600-1)	2420-1 3/4 629 (700-1 3/4)	2460-2 669 (700-2)	2620-3 829 (900-3)

SC-2, 11 JUN 2026 to 09 JUL 2026

SC-2, 11 JUN 2026 to 09 JUL 2026