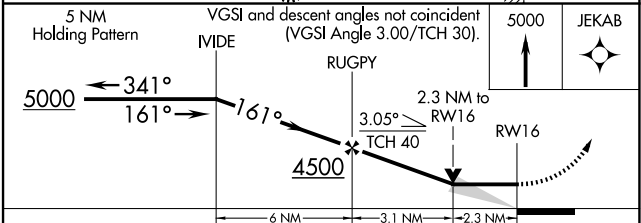
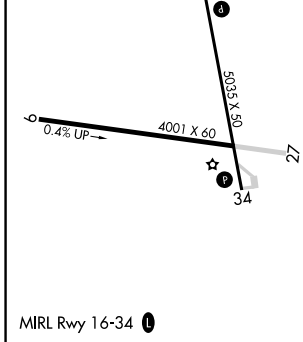
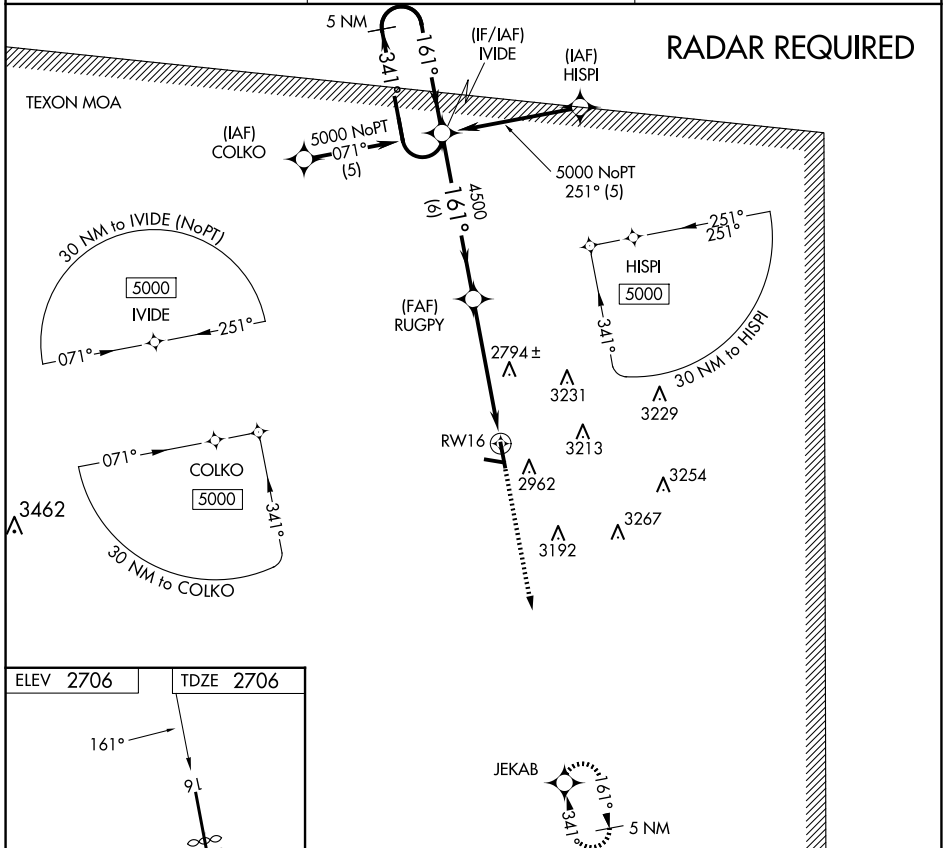


APP CRS	Rwy Idg	4030
161°	TDZE	2706
	Apt Elev	2706

RNAV (GPS) RWY 16

REAGAN COUNTY (E41)

RNP APCH		MISSED APPROACH: Climb to 5000 direct JEKAB and hold.	
When local altimeter not received, use San Angelo altimeter setting. Circling NA east of Rwy 16-34.			
AWOS-3PT	FORT WORTH CENTER	CTAF	
118.4	126.15 322.55	122.9	



CATEGORY	A	B	C	D
LNAV MDA	3460-1 754 (800-1)	3460-1¼ 754 (800-1¼)	3460-2¼ 754 (800-2¼)	NA
CIRCLING	3460-1 754 (800-1)	3460-1¼ 754 (800-1¼)	3460-2¼ 754 (800-2¼)	NA

SC-3, 16 APR 2026 to 14 MAY 2026

SC-3, 16 APR 2026 to 14 MAY 2026