

APP CRS	Rwy Idg	3328
033°	TDZE	9
	Apt Elev	10

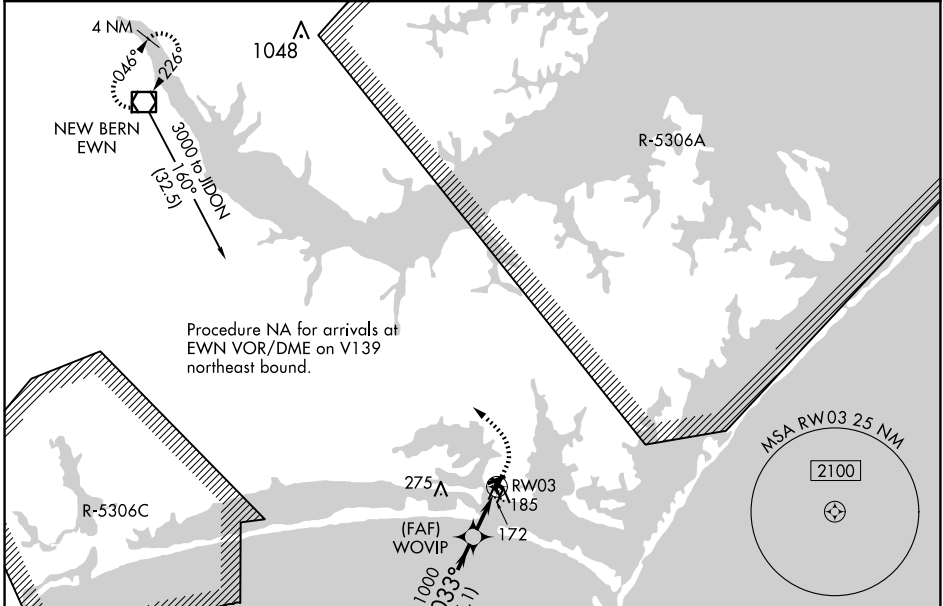
RNAV (GPS) RWY 3

MICHAEL J SMITH FLD (MR.H)

⚠ Circling Rwy 8, 14, 32 NA at night. DME/DME RNP-0.3 NA. ATC clearance required to penetrate R-5306A and R-5306C. When local altimeter setting not received, use Cherry Point MCAS (Cunningham Fld) altimeter setting and increase all MDA 40 feet. Rwy 3 helicopter visibility reduction below 3/4 SM NA. VDP NA when using Cherry Point MCAS (Cunningham Fld) altimeter setting. Rwy 8, 14, 32 helicopter visibility reduction below 1 SM NA.

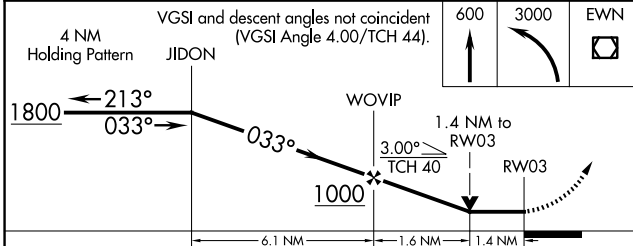
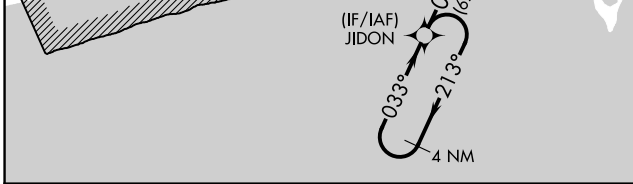
MISSED APPROACH: Climb to 600 then climbing left turn to 3000 direct EWN VOR/DME and hold.

ASOS 135.375	CHERRY POINT APP CON 132.575 299.6	CLNC DEL 125.65	UNICOM 122.8 (CTAF) 0
------------------------	--	---------------------------	---------------------------------

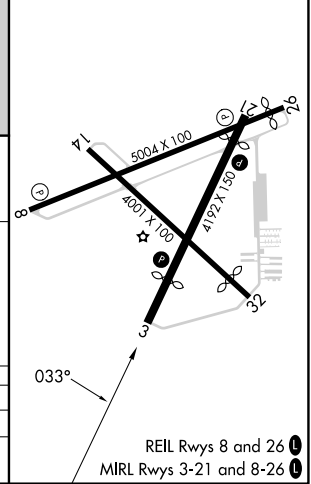


Procedure NA for arrivals at EWN VOR/DME on V139 northeast bound.

ELEV 10	TDZE 9
---------	--------



CATEGORY	A	B	C	D
LNNAV MDA	480-1	471 (500-1)		NA
CIRCLING	540-1	530 (600-1)		NA



REIL Rwys 8 and 26
MIRL Rwys 3-21 and 8-26

SE-2, 16 APR 2026 to 14 MAY 2026

SE-2, 16 APR 2026 to 14 MAY 2026