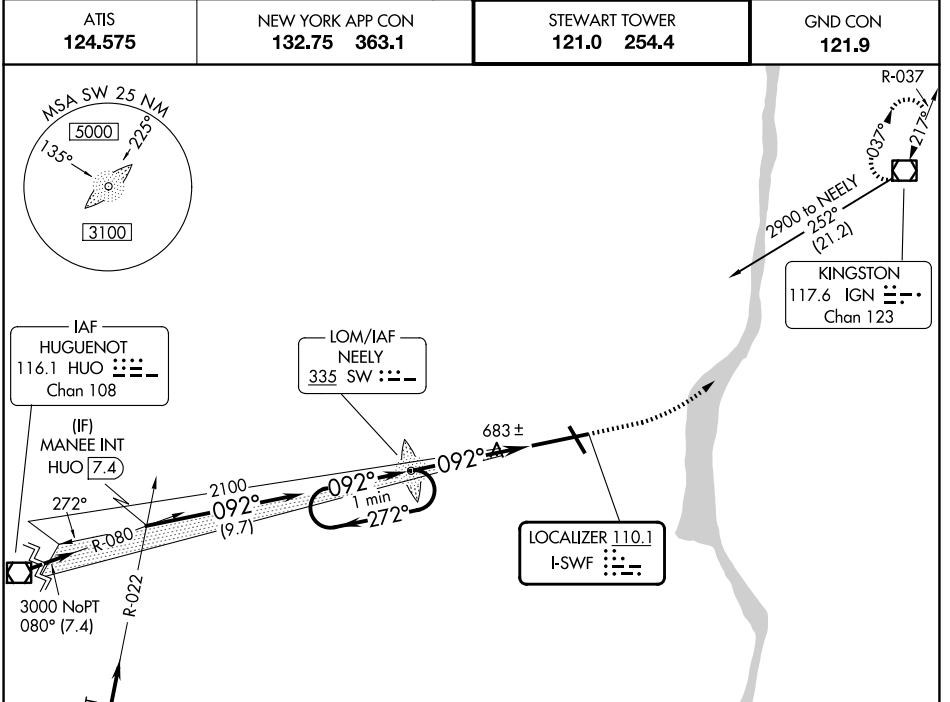


LOC I-SWF 110.1	APP CRS 092°	Rwy Ldg 8817
		TDZE 482
		Apt Elev 491

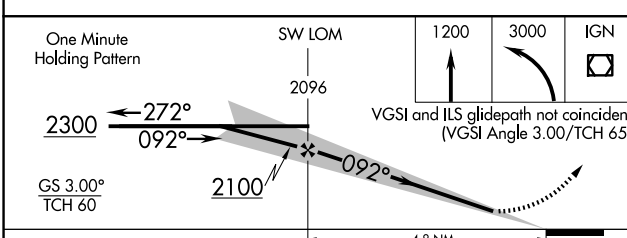
ILS or LOC RWY 9

NEW YORK STEWART INTL (SWF)

	MISSED APPROACH: Climb to 1200 then climbing left turn to 3000 direct IGN VOR/DME and hold.		
	ATIS 124.575	NEW YORK APP CON 132.75 363.1	STEWART TOWER 121.0 254.4



Procedure NA for arrivals at SAX VORTAC on airway radials 029 CW 060.



ELEV 491	D	TDZE 482
TDZ/CL Rwy 9 HIRL Rwy 9-27 and 16-34 REIL Rwy 16, 27 and 34		
FAF to MAP 4.8 NM		
Knots	60	90 120 150 180
Min:Sec	4:48	3:12 2:24 1:55 1:36

NE-2, 16 APR 2026 to 14 MAY 2026

NE-2, 16 APR 2026 to 14 MAY 2026