

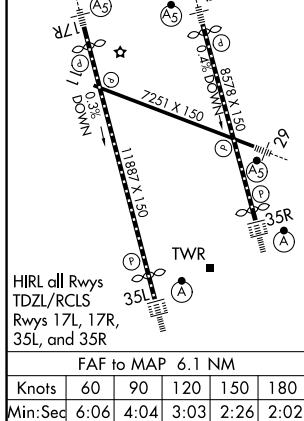
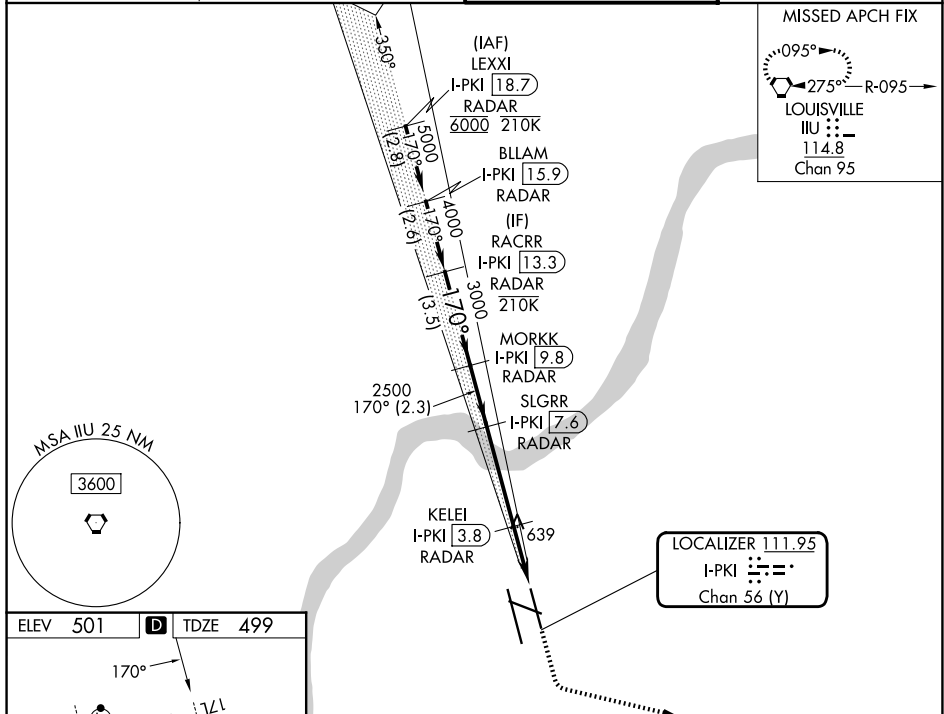
LOC/DME I-PKI <b>111.95</b>	APP CRS <b>170°</b>	Rwy Ldg <b>7800</b>
Chan <b>56 (Y)</b>	TDZE <b>499</b>	Apt Elev <b>501</b>

# ILS or LOC RWY 17L

LOUISVILLE MUHAMMAD ALI INTL (SDF)

DME or RADAR required. RADAR required for procedure entry.		MALSR 	MISSED APPROACH: Climb to 1000 then climbing left turn to 3000 direct IJU VORTAC, continue climb-in-hold to 3000.
Simultaneous approach authorized. Circling Rwy 11 NA at night. For inop ALS, increase S-LOC 17L Cat C/D visibility to 1 3/8 SM.			

D-ATIS <b>118.725</b>	LOUISVILLE APP CON <b>132.075 327.0</b>	LOUISVILLE TOWER <b>124.2 257.8</b>	GND CON <b>121.7 348.6</b>
--------------------------	--------------------------------------------	----------------------------------------	-------------------------------



	VGSi and ILS glidepath not coincident (VGSi Angle 3.00/TCH 63).		1000	3000	IJU
CATEGORY	A	B	C	D	
S-ILS 17L	699/18		200 (200-1/2)		
S-LOC 17L	1000/24	501 (500-1/2)	1000/55	501 (500-1)	
CIRCLING	1040-1 539 (600-1)	1140-1 639 (700-1)	1160-1 3/4 659 (700-1 3/4)	1400-3 899 (900-3)	

SE-1, 16 APR 2026 to 14 MAY 2026

SE-1, 16 APR 2026 to 14 MAY 2026