

WAAS CH <b>86440</b> <b>W11A</b>	APP CRS <b>109°</b>	Rwy Idg TDZE Apt Elev	<b>6300</b> <b>4854</b> <b>4874</b>
--	------------------------	-----------------------------	---

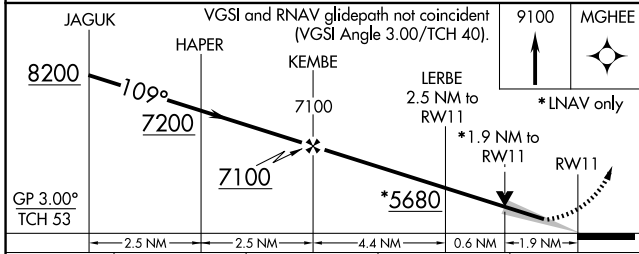
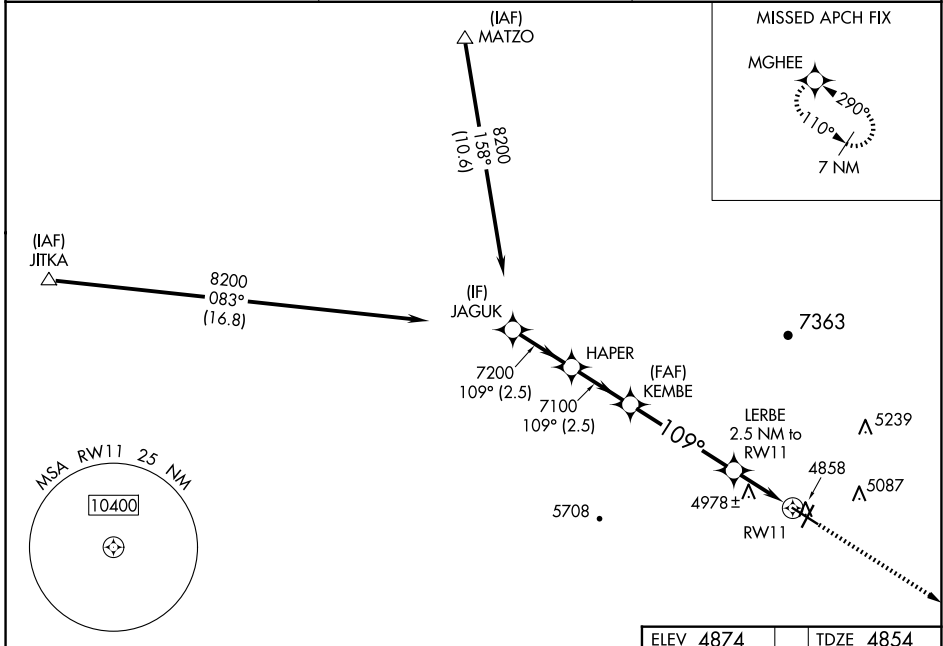
# RNAV (GPS) RWY 11

COLORADO CITY MUNI (AZC)

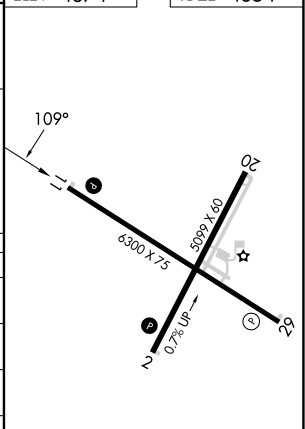
**⚠** For uncompensated Baro-VNAV systems, LNAV/VNAV NA below -24°C (-11°F) or above 51°C (125°F). Circling NA for Cat D north of Rwy 11-29. DME/DME RNP-0.3 NA.

MISSED APPROACH: Climb to 9100 direct MGHEE and hold, continue climb-in-hold to 9100.  
#Missed approach requires minimum climb of 240 feet per NM to 7500.

AWOS-3PT <b>118.375</b>	LOS ANGELES CENTER <b>124.2 343.6</b>	UNICOM <b>122.7 (CTAF) 0</b>
----------------------------	--	---------------------------------



ELEV 4874	TDZE 4854
-----------	-----------



CATEGORY	A	B	C	D
LPV DA#	5104-1 250 (300-1)			
LPV DA	5297-1½ 443 (500-1½)			
LNAV/VNAV DA	5463-2½ 609 (600-2½)			
LNAV MDA	5500-1 646 (700-1)	5500-1⅞ 646 (700-1⅞)		
<b>C</b> CIRCLING	5500-1 626 (700-1)	5520-1 646 (700-1)	6880-3 2006 (2100-3)	

REIL Rwy 11 **0**  
REIL Rwy 29  
MIRL Rwys 11-29 and 2-20 **0**

SW-4, 19 MAR 2026 to 16 APR 2026

SW-4, 19 MAR 2026 to 16 APR 2026