

APP CRS <b>167°</b>	Rwy Ldg TDZE Apt Elev	<b>4005</b> <b>442</b> <b>442</b>
------------------------	-----------------------------	---

# RNAV (GPS) RWY 17

RUSK COUNTY (R.F.I)

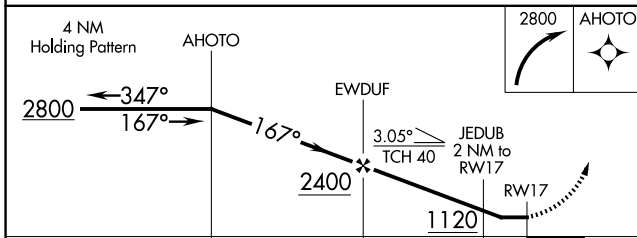
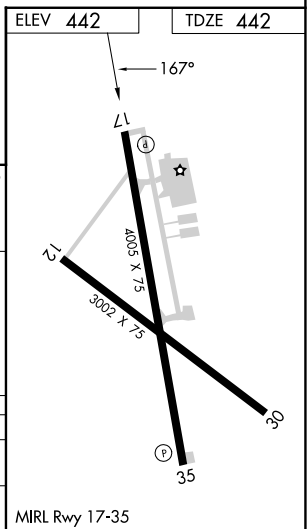
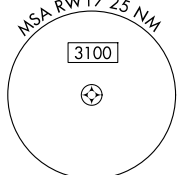
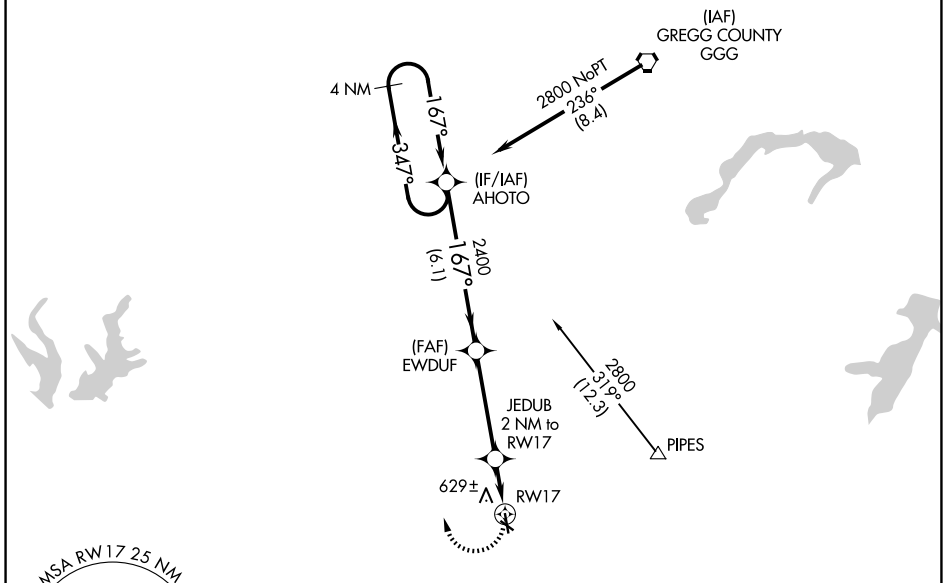
RNP APCH

▼ Rwy 17 helicopter visibility reduction below 1 SM NA. When local altimeter setting not received, use Longview altimeter setting and increase all MDA 60 feet.  
 ▲ Rwy 17 Straight-in minimums NA at night. Circling Rwy 12, 17 and 30 NA at night.

MISSED APPROACH: Climbing right turn to 2800 direct AHOTO and hold.

AWOS-3 <b>119.375</b>	LONGVIEW APP CON ★ <b>124.275 257.975</b>	UNICOM <b>122.8</b> (CTAF)
--------------------------	--	-------------------------------

Procedure NA for arrivals at GGG VORTAC on V94 eastbound.



CATEGORY	A	B	C	D
LNVA MDA	980-1	538 (600-1)	980-1½ 538 (600-1½)	NA
CIRCLING	980-1	538 (600-1)	1200-2½ 758 (800-2½)	NA

SC-2, 19 MAR 2026 to 16 APR 2026

SC-2, 19 MAR 2026 to 16 APR 2026